

RANGEMASTER



*sinks  
& taps*

# WELCOME TO *the family*



Our sink and tap collection is renowned for its durable build and high quality. With over 90 years’ experience manufacturing stainless steel sinks we are the No.1 sink manufacturer in the UK, with the majority of our sinks being manufactured at our factory in Long Eaton, Nottingham.

The kitchen sink area is the most used space in the kitchen so it’s vital that your chosen sink and tap is built to last in the busiest of environments.

Using the best sourced raw materials available and advanced manufacturing techniques, we design and engineer

our products so that they combine functionality, durability and stylish design.

Whether you’re retro-fitting or re-styling your kitchen our wide range of sinks and taps cater for all budgets and styles; from the ultra contemporary to the farmhouse-style traditional kitchen schemes.

We are confident our sinks and taps are built to last so that’s why we offer a 25 year warranty on our stainless steel & granite sinks collections, 10 years warranty with our fire-clay ceramic sinks and 5 years warranty with our tap collection.

## STAINLESS STEEL SINKS

Cosmo	10
Arlington	11
Boston	12
Iconica	13
Oakland	14-15
Manhattan	15
Houston	16
Michigan	17
Glendale	18
Baltimore	19
Spectra	21
Baseline	22-23
Kube	24-25
Cubix	26-27
Quad	28-29
Classic	30-31

## GRANITE SINKS

Prato	34
Topaz	35
Elements	36
Andesite	37
Loa	38
Paragon	39
Oridian Inset	40
Oridian Undermount	41

## FIRE-CLAY SINKS

Arlington	44
Austell	45
Rustic	46
Tenby	47
Hartland	48
Rustique	49-51
Farmhouse	52-53
Classic Belfast	53
Grange	54
Sandwood	55
Belfast	55

## KITCHEN TAPS

Filter Taps	58
Pull-Out Taps	59
Single Lever Taps	60
Dual Lever Taps	62-65

## ACCESSORIES

Waste Disposal Units	66
Sink Accessories	66-67



## OUR COMMITMENT TO THE ENVIRONMENT

It is testament to our reliability and commitment to the environment that Rangemaster is the proud recipient of double ISO accreditation.

BS EN ISO 9001 certifies that Rangemaster products are designed and manufactured to an internationally recognised quality management system, while BS EN 14001 acknowledges our commitment to continually improving environmental performance by adopting an approved environmental management system.





# NEW PRODUCTS



## LARGE FARMHOUSE

Designed to harmoniously integrate modern living with a traditional country aesthetic, the new Farmhouse Belfast kitchen sink presents a sophisticated alternative to classic designs. The newly introduced Farmhouse features a spacious 795mm bowl, offering enhanced practicality and functionality for any kitchen all while maintaining a strikingly elegant appearance.

Visit pg. 52



## BASELINE

The Baseline sink range is expertly designed for installation into your worktop surface, allowing the stone worktop to seamlessly align with the sides of the sink bowl. This configuration creates a stunning waterfall effect, showcasing only the base and overflow, resulting in a truly minimalist aesthetic.

Visit pg. 22



## AQUACLASSIC TAP

For an elevated traditional look, the new Aquaclassic Bridge Tap brings a perfect classic feel. Available in Antique Brass, Chrome, or Brushed finish, it pairs beautifully with any Rangemaster ceramic sink for a refined aesthetic.

Also available as Dual Lever Monobloc Tap

Visit pg. 63-65



## PRATO WORKSTATION

Divided into three different working levels to maximise the space available within the bowl, the Prato sink provides a functional compact workstation, to aid in the food preparation of the everyday culinary chef. Sliding accessories (cutting board, colander and flex drainer) can be positioned on three levels dependent on your food preparation needs.

Our workstation is designed to conceal modern kitchen mess with style and takes the trend for granite sinks a step further by adding hidden functionality.

Visit pg. 34

# CHOOSING YOUR SINK

## MATERIAL TYPE



### STAINLESS STEEL

Remaining the most popular choice when choosing a kitchen sink, stainless steel is a robust, hygienic and hard-working solution. Rangemaster offer one of the largest and comprehensive ranges of stainless steel sinks providing a solution for every installation.

- 18/10 Stainless Steel
- Pre-fitted Seals
- Waste Kit Included
- 25 Year Warranty



### GRANITE

For a modern and contemporary look, choose a granite sink, which are available in multiple different design options in an array of different colours.

- Durable Material
- Hygienic Surface
- UV Stability
- Waste Kit Included
- 25 Year Warranty



### FIRE-CLAY CERAMIC

A fire-clay ceramic sink will create the ultimate statement piece; with a wide variety of installation options available there is a design style suitable for any style of kitchen.

- Easy Clean Surface
- Superior Strength
- Waste Kit Included
- 10 Year Warranty

## INSTALLATION TYPE



### INSET

An inset kitchen sink is compatible with any choice of worktop material, making it the most popular design choice. Rangemaster's inset sinks are pre-fitted with seals to create the ultimate barrier against water ingress and prevent potential future damage if water were to seep through, making these sinks a great accompaniment to laminate worktops.

The added benefit of its integrated drainer offers additional food preparation space and allows washed pots to be dried effortlessly.

Available in Stainless Steel, Granite or Fire-Clay Ceramic



### UNDERMOUNT

Choose an undermount sink for a sleek, modern and minimalist look. These sinks are installed on the underside of the work surface which extends the worktop area and offers a seamless finished look; increasing the worktop space available makes these sinks an ideal solution for compact kitchen spaces.

Often paired with granite, solid surface and wooden worktops, an undermount sink is a modern solution for a minimalist kitchen scheme.

Available in Stainless Steel, Granite or Fire-Clay Ceramic



### SIT-ON BELFAST

Create the ultimate statement piece in your kitchen with the addition of a sit-on Belfast sink, traditionally styled; these sinks complement shaker style kitchen cabinetry beautifully.

Featuring generous deep bowls, a sit-on Belfast sink is ideal for washing large pots and pans which can't fit into a dishwasher easily.

Available in Fire-Clay Ceramic





# STAINLESS STEEL SINKS

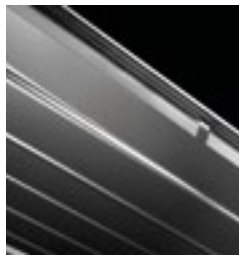
Stainless steel remains the most popular material choice when choosing a kitchen sink due to its hard wearing and long-lasting properties. Rangemaster stainless steel sinks are all manufactured using high-grade 18/10 stainless steel, whereby the additional nickel property included in this material grade offers a long lasting high-sheen finish.

The majority of our stainless-steel sinks are manufactured in the heart of the midlands in the UK, where each Rangemaster sink is hand finished by our experienced craftsmen and supplied with a 25-year warranty offering you peace of mind when purchasing.

There are an array of different designs available suiting inset and undermount installations.



## KEY FEATURES



### FITTED SEALS

All stainless steel inset sinks are pre-fitted with seals reducing installation time whilst ensuring a perfect, water-tight fit is retained with the work surface.



### SUBTLE GROUND EDGE TRIM

All stainless steel inset sinks are finished with a ground edge trim to beautifully frame the sink.



### MICRO-SHEEN™ FINISH

All Rangemaster stainless steel sinks feature a Micro-Sheen™ finished surface; which offers a soft brushed appearance with a polished finish. This advanced application provides a lustrous finished look whilst also enhancing the sinks resistance against heat, scratches and stains.



### 25 YEAR WARRANTY

Rangemaster stainless steel sinks include a 25-year warranty



### GAUGE MATERIAL

Sinks vary from 0.6 to 1.0mm gauge, the higher the gauge of material the thicker the material is.



### MINIMUM CABINET SIZE

Sink options available to suit 450mm, 500mm, 600mm, 800mm and 1000mm cabinets.



### REVERSIBLE INSTALLATION

The sink can be fitted with a left-hand or right-hand drainer option.





# COSMO

A seamless finished design with a unique brushed patterned drainer, the Cosmo sink stands out from the crowd.

Left-hand drainer shown



## 960 x 500mm Single Bowl Inset Sink

Main Bowl Size	460 x 400 x 210mm (L x W x D)
Material	18/10 Stainless Steel – 1.0mm gauge
Finish	Micro-sheen Brushed Polished Finish
Min. Base Unit	600mm
Drainer Position	Handed

Sink	CSM9601L/ (left hand) CSM9601R/ (right hand)
------	---

Waste kit	Waste kit and cover included
-----------	------------------------------

1.0

600

Left-hand drainer shown



## 960 x 500mm 1.5 Bowl Inset Sink

Main Bowl Size	350 x 400 x 200mm (L x W x D)
Second Bowl Size	180 x 400 x 140mm (L x W x D)
Material	18/10 Stainless Steel – 1.0mm gauge
Finish	Micro-sheen Brushed Polished Finish
Min. Base Unit	600mm
Drainer Position	Handed

Sink	CSM9602L/ (left hand) CSM9602R/ (right hand)
------	---

Waste kit	Waste kit and cover included
-----------	------------------------------

1.0

600



## 600 x 515mm Single Bowl Inset Sink

Main Bowl Size	550 x 400 x 200mm (L x W x D)
Material	18/10 Stainless Steel – 1.0mm gauge
Finish	Micro-sheen Brushed Polished Finish
Min. Base Unit	600mm
Drainer Position	-

Sink	CSM60/
------	--------

Waste kit	Waste kit included
-----------	--------------------

1.0

600



# ARLINGTON

Embracing the trend for all things geometric, featuring a stylish smooth drainer, for a bold but streamlined addition to a contemporary kitchen scheme.



0.9

600

R

## 1000 x 500mm Single Bowl Inset Sink

Main Bowl Size	450 x 400 x 215mm (L x W x D)
Material	18/10 Stainless Steel – 0.9mm gauge
Finish	Micro-sheen Brushed Polished Finish
Min. Base Unit	600mm
Drainer Position	Reversible

Sink	ARL1051/
------	----------

Waste kit	Waste kit and cover included
-----------	------------------------------



0.9

600

R

## 1000 x 500mm 1.5 Bowl Inset Sink

Main Bowl Size	340 x 400 x 210mm (L x W x D)
Second Bowl Size	170 x 300 x 150mm (L x W x D)
Material	18/10 Stainless Steel – 0.9mm gauge
Finish	Micro-sheen Brushed Polished Finish
Min. Base Unit	600mm
Drainer Position	Reversible

Sink	ARL1052/
------	----------

Waste kit	Waste kit and cover included
-----------	------------------------------





# BOSTON

Sleek and compact – the new Boston collection features large deep bowls paired with a small compact drainer and back tap ledge.



1.0

600

860 x 520mm Single Bowl Inset Sink

Main Bowl Size	500 x 400 x 210mm (L x W x D)
Material	18/10 Stainless Steel - 1.0mm gauge
Finish	Micro-sheen Brushed Polished Finish
Min. Base Unit	600mm
Drainer Position	Handed

Sink **BST8601L/** (left hand)  
**BST8601R/** (right hand)

Waste kit Waste kit and cover included



1.0

600

860 x 520mm 1.5 Bowl Inset Sink

Main Bowl Size	340 x 400 x 205mm (L x W x D)
Second Bowl Size	180 x 400 x 205mm (L x W x D)
Material	18/10 Stainless Steel - 1.0mm gauge
Finish	Micro-sheen Brushed Polished Finish
Min. Base Unit	600mm
Drainer Position	Handed

Sink **BST8602L/** (left hand)  
**BST8602R/** (right hand)

Waste kit Waste kit and cover included



# ICONICA

Modern looks paired with practical functionality, Iconica features a flat drainer design complemented with large bowls, ideal for washing larger pots and pans.



0.9

600

(R)

950 x 508mm Single Bowl Inset Sink

Main Bowl Size	400 x 400 x 205mm (L x W x D)
Material	18/10 Stainless Steel - 0.9mm gauge
Finish	Micro-sheen Brushed Polished Finish
Min. Base Unit	600mm
Drainer Position	Reversible

Sink **ICN9501/**

Waste kit Waste kit and cover included



0.9

600

(R)

950 x 508mm 1.5 Bowl Inset Sink

Main Bowl Size	340 x 400 x 200mm (L x W x D)
Second Bowl Size	170 x 300 x 130mm (L x W x D)
Material	18/10 Stainless Steel - 0.9mm gauge
Finish	Micro-sheen Brushed Polished Finish
Min. Base Unit	600mm
Drainer Position	Reversible

Sink **ICN9502/**

Waste kit Waste kit and cover included



## OAKLAND

Oakland is a popular choice when designing a new kitchen thanks to its large bowls and practical drainer design, which is now bolstered with a new reversible collection offering more flexibility when installing.



0.9

600

### 985 x 508mm Single Bowl Inset Sink

Main Bowl Size	450 x 420 x 190mm (L x W x D)
Material	18/10 Stainless Steel - 0.9mm gauge
Finish	Micro-sheen Brushed Polished Finish
Min. Base Unit	600mm
Drainer Position	Handed

Sink **OL9851L/** (left hand)  
**OL9851R/** (right hand)

Waste kit Waste kit included



0.9

600

### 985 x 508mm 1.5 Bowl Inset Sink

Main Bowl Size	360 x 424 x 170mm (L x W x D)
Second Bowl Size	156 x 342 x 120mm (L x W x D)
Material	18/10 Stainless Steel - 0.9mm gauge
Finish	Micro-sheen Brushed Polished Finish
Min. Base Unit	600mm
Drainer Position	Handed

Sink **OL9852L/** (left hand)  
**OL9852R/** (right hand)

Waste kit Waste kit included

Accessories Stainless Steel Strainer Bowl **KA28SS/**



0.9

600

R

### 1000 x 500mm Single Bowl Inset Sink

Main Bowl Size	450 x 400 x 210mm (L x W x D)
Material	18/10 Stainless Steel - 0.9mm gauge
Finish	Micro-sheen Brushed Polished Finish
Min. Base Unit	600mm
Drainer Position	Reversible

Sink **OAK1051/**

Waste kit Waste kit and cover included



0.9

600

R

### 1000 x 500mm 1.5 Bowl Inset Sink

Main Bowl Size	340 x 400 x 205mm (L x W x D)
Second Bowl Size	170 x 300 x 135mm (L x W x D)
Material	18/10 Stainless Steel - 0.9mm gauge
Finish	Micro-sheen Brushed Polished Finish
Min. Base Unit	600mm
Drainer Position	Reversible

Sink **OAK1052/**

Waste kit Waste kit and cover included

## MANHATTAN

Larger than other stainless steel inset sinks, the Manhattan kitchen sink boasts a large recessed drainer preventing water spillage and low profile edges providing a flush finished appearance.



0.9

500

### 1010 x 515mm Single Bowl Inset Sink

Main Bowl Size	400 x 420 x 190mm (L x W x D)
Material	18/10 Stainless Steel - 0.9mm gauge
Finish	Micro-sheen Brushed Polished Finish
Min. Base Unit	500mm
Drainer Position	Handed

Sink **MN10101L/** (left hand)  
**MN10101R/** (right hand)

Waste kit Waste kit included



0.9

600

### 1010 x 515mm 1.5 Bowl Inset Sink

Main Bowl Size	350 x 420 x 190mm (L x W x D)
Second Bowl Size	156 x 342 x 120mm (L x W x D)
Material	18/10 Stainless Steel - 0.9mm gauge
Finish	Micro-sheen Brushed Polished Finish
Min. Base Unit	600mm
Drainer Position	Handed

Sink **MN10102L/** (left hand)  
**MN10102R/** (right hand)

Waste kit Waste kit included

Accessories Stainless Steel Strainer Bowl KA28SS/





## HOUSTON

The Houston kitchen sink features an eye-catching ‘waterfall’ styled drainer which promises to create a design statement in any kitchen.



0.9

600

R

### 985 x 508mm Single Bowl Inset Sink

Main Bowl Size	400 x 420 x 190mm (L x W x D)
Material	18/10 Stainless Steel – 0.9mm gauge
Finish	Micro-sheen Brushed Polished Finish
Min. Base Unit	600mm
Drainer Position	Reversible

Sink	HS9851/
Waste kit	Waste kit included



0.9

600

R

### 985 x 508mm 1.5 Bowl Inset Sink

Main Bowl Size	350 x 420 x 190mm (L x W x D)
Second Bowl Size	156 x 342 x 125mm (L x W x D)
Material	18/10 Stainless Steel – 0.9mm gauge
Finish	Micro-sheen Brushed Polished Finish
Min. Base Unit	600mm
Drainer Position	Reversible

Sink	HS9852/
Waste kit	Waste kit included
Accessories	Stainless Steel Strainer Bowl KA28SS/

## MICHIGAN

Made from high-grade 18/10 stainless steel, the Michigan kitchen sink is a robust solution perfect for busy family homes.



### 800 x 508mm Compact Single Bowl Inset Sink

Main Bowl Size	360 x 424 x 155mm (L x W x D)
Material	18/10 Stainless Steel – 0.7mm gauge
Finish	Micro-sheen Brushed Polished Finish
Min. Base Unit	500mm
Drainer Position	Reversible

Sink	MG8001/
Waste kit	Waste kit included

0.7

500

R



### 950 x 508mm Single Bowl Inset Sink

Main Bowl Size	360 x 424 x 155mm (L x W x D)
Material	18/10 Stainless Steel – 0.7mm gauge
Finish	Micro-sheen Brushed Polished Finish
Min. Base Unit	500mm
Drainer Position	Reversible

Sink	MG9501/
Waste kit	Waste kit included

0.7

500

R



### 950 x 508mm 1.5 Bowl Inset Sink

Main Bowl Size	360 x 424 x 155mm (L x W x D)
Second Bowl Size	151 x 300 x 120mm (L x W x D)
Material	18/10 Stainless Steel – 0.7mm gauge
Finish	Micro-sheen Brushed Polished Finish
Min. Base Unit	600mm
Drainer Position	Reversible

Sink	MG9502/
Waste kit	Waste kit included

0.7

600

R





# BALTIMORE

Featuring a stylish “sun burst” designed drainer and manufactured from high-grade stainless steel, the Baltimore kitchen sink sits perfectly within a contemporary styled kitchen.



# GLENDALE

The Glendale kitchen sink features a bold drainer framed with a distinct subtle ground-edge trim which provides a unique finished look incorporating two-toned stainless steel.



0.7  
500  
R

## 950 x 508mm Single Bowl Inset Sink

Main Bowl Size	360 x 424 x 155mm (L x W x D)
Material	18/10 Stainless Steel – 0.7mm gauge
Finish	Micro-sheen Brushed Polished Finish
Min. Base Unit	500mm
Drainer Position	Reversible

Sink	GL9501/
Waste kit	Waste kit included



0.7  
600  
R

## 950 x 508mm 1.5 Bowl Inset Sink

Main Bowl Size	360 x 424 x 155mm (L x W x D)
Second Bowl Size	156 x 342 x 120mm (L x W x D)
Material	18/10 Stainless Steel – 0.7mm gauge
Finish	Micro-sheen Brushed Polished Finish
Min. Base Unit	600mm
Drainer Position	Reversible

Sink	GL9502/
Waste kit	Waste kit included
Accessories	Stainless Steel Strainer Bowl KA28SS/



## 800 x 508mm Compact Single Bowl Inset Sink

Main Bowl Size	340 x 424 x 150mm (L x W x D)
Material	18/10 Stainless Steel – 0.7mm gauge
Finish	Micro-sheen Brushed Polished Finish
Min. Base Unit	450mm
Drainer Position	Reversible

Sink	BL8001/
Waste kit	Waste kit included

0.7  
450  
R

## 950 x 508mm Single Bowl Inset Sink

Main Bowl Size	420 x 400 x 160mm (L x W x D)
Material	18/10 Stainless Steel – 0.7mm gauge
Finish	Micro-sheen Brushed Polished Finish
Min. Base Unit	600mm
Drainer Position	Reversible

Sink	BL9501/
Waste kit	Waste kit included

0.7  
600  
R

## 950 x 508mm 1.5 Bowl Inset Sink

Main Bowl Size	340 x 410 x 160mm (L x W x D)
Second Bowl Size	175 x 320 x 80mm (L x W x D)
Material	18/10 Stainless Steel – 0.8mm gauge
Finish	Micro-sheen Brushed Polished Finish
Min. Base Unit	600mm
Drainer Position	Reversible

Sink	BL9502/
Waste kit	Waste kit included

0.8  
600  
R



# SINGLE BOWL SINKS

Choose an undermount sink for a sleek, modern and minimalist look in your kitchen.

These sinks are installed on the underside of the work surface which extends the worktop area and offers a seamless finished look. This design maximizes the available countertop area, making undermount sinks an excellent choice for compact kitchen environments.



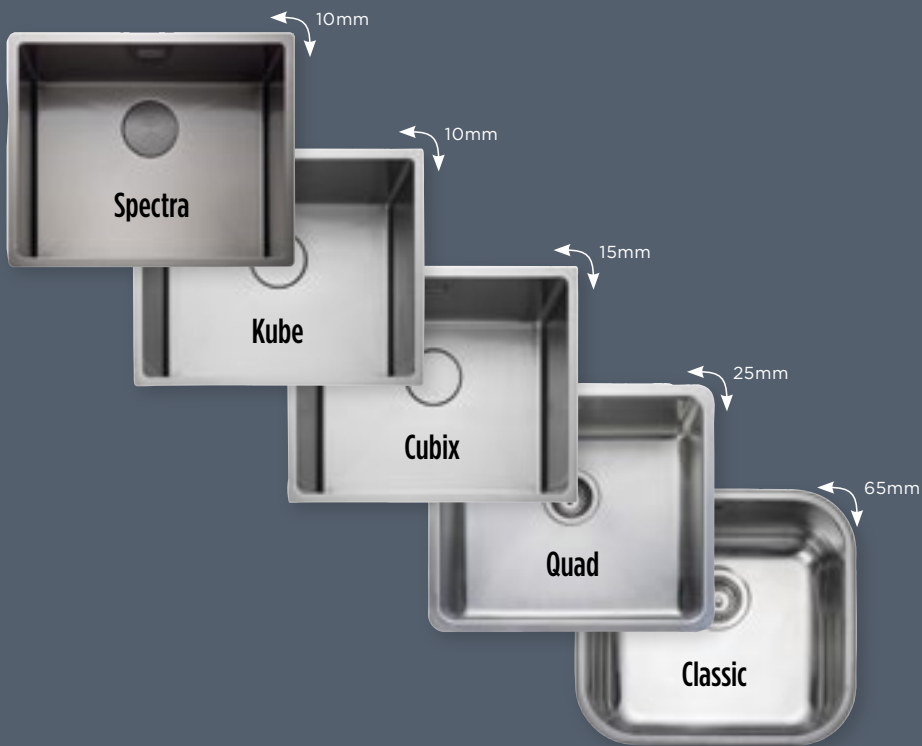
Inset



Undermount

Our Quad, Cubix, Kube, and Spectra products are designed to offer dual fixing options. As a result, they can be utilised as either inset or undermount fittings, with both clip sets included.

We offer a variety of corner radius options. The corner radius refers to the curvature of the sink's inner corners. Traditional sinks typically feature a larger radius, while a smaller radius lends a more contemporary style.



## SPECTRA

Create a striking sink area with Spectra, a metallic PVD stainless steel collection, which is available in three sumptuous shades designed to add dimension and glamour to any contemporary kitchen scheme.

Available Colours

CP

GL

GR

Copper Gold Graphite



540 x 440mm Single Bowl Inset / Undermount Sink

Main Bowl Size	500 x 400 x 200mm (L x W x D)
Material	18/10 Stainless Steel - 1.0mm gauge
Finish	Micro-sheen PVD Finish
Min. Base Unit	600mm
Drainer Position	-
Installation	Inset or Undermount

Sink **SPE50\_\_**

Waste kit Waste kit and cover included



555 x 440mm 1.5 Bowl Inset/Undermount Sink

Main Bowl Size	340 x 400 x 200mm (L x W x D)
Second Bowl Size	160 x 400 x 140mm (L x W x D)
Material	18/10 Stainless Steel - 1.0mm gauge
Finish	Micro-sheen PVD Finish
Min. Base Unit	600mm
Drainer Position	Handed
Installation	Inset or Undermount

Sink **SPE3416L\_\_** (Left-hand)  
**SPE3416R\_\_** (Right-hand)

Waste kit Waste kit and cover included

\*Replace '\_\_' in the sink code with your chosen colour suffix.  
GR - Graphite, GL - Gold, CP - Copper

New  
BASE-LINE

Our Base-line stepped base sink enables your solid surface worktop to seamlessly align with the side of the sink bowl, showcasing only the stainless steel base, for a truly minimalist aesthetic. This design offers a minimalist look that is even more discreet and refined than a traditional undermount sink.



214 x 460 Single Bowl Stepped Base Sink

Main Bowl Size	194 x 440 x 130mm (L x W x D)
Material	18/10 Stainless Steel - 1.0mm gauge
Finish	Micro-sheen
Min. Base Unit	300mm
Drainer Position	Undermount



Sink	<b>BASE18/</b>
Waste kit	Waste kit and cover included

360 x 460 Single Bowl Stepped Base Sink

Main Bowl Size	440 x 340 x 175mm (L x W x D)
Material	18/10 Stainless Steel - 1.0mm gauge
Finish	Micro-sheen
Min. Base Unit	450mm
Drainer Position	Undermount



Sink	<b>BASE34/</b>
Waste kit	Waste kit and cover included

520 x 460 Single Bowl Stepped Base Sink

Main Bowl Size	440 x 500 x 175mm (L x W x D)
Material	18/10 Stainless Steel - 1.0mm gauge
Finish	Micro-sheen
Min. Base Unit	600mm
Drainer Position	Undermount



Sink	<b>BASE50/</b>
Waste kit	Waste kit and cover included





KUBE

With a dramatic 10 mm radius defining the corners to this bowl type, the Kube undermount creates a geometric effect which will sit perfectly within streamlined cabinetry.



220 x 440mm Single Bowl Sink Inset / Undermount Sink

Main Bowl Size	180 x 400 x 140mm (L x W x D)
Material	18/10 Stainless Steel – 1.0mm gauge
Finish	Micro-sheen Brushed Polished Finish
Min. Base Unit	300mm
Drainer Position	-
Installation	Inset or Undermount

Sink	KUBE18/
Waste kit	Waste kit and cover included

1.0

300



740 x 440mm Single Bowl Inset/ Undermount Sink

Main Bowl Size	700 x 400 x 200mm (L x W x D)
Material	18/10 Stainless Steel – 1.0mm gauge
Finish	Micro-sheen Brushed Polished Finish
Min. Base Unit	800mm
Drainer Position	-
Installation	Inset or Undermount

Sink	KUBE70/
Waste kit	Waste kit and cover included

1.0

800



380 x 440 Single Bowl Inset / Undermount Sink

Main Bowl Size	340 x 400 x 200mm (L x W x D)
Material	18/10 Stainless Steel – 1.0mm gauge
Finish	Micro-sheen Brushed Polished Finish
Min. Base Unit	450mm
Drainer Position	-
Installation	Inset or Undermount

Sink	KUBE34/
Waste kit	Waste kit and cover included

1.0

450

Left-hand shown



560 x 440 1.5 Bowl Inset / Undermount Sink

Main Bowl Size	340 x 400 x 200mm (L x W x D)
Second Bowl Size	160 x 400 x 140mm (L x W x D)
Material	18/10 Stainless Steel – 1.0mm gauge
Finish	Micro-sheen Brushed Polished Finish
Min. Base Unit	600mm
Drainer Position	Handed
Installation	Inset or Undermount

Sink	KUBE3416L/ (left hand) KUBE3416R/ (right hand)
Waste kit	Waste kit and cover included

1.0

600



440 x 440mm Single Bowl Sink Inset / Undermount Sink

Main Bowl Size	400 x 400 x 200mm (L x W x D)
Material	18/10 Stainless Steel – 1.0mm gauge
Finish	Micro-sheen Brushed Polished Finish
Min. Base Unit	500mm
Drainer Position	-
Installation	Inset or Undermount

Sink	KUBE40/
Waste kit	Waste kit and cover included

1.0

500

Right-hand shown



740 x 440mm 1.5 Bowl Inset/ Undermount Sink

Main Bowl Size	500 x 400 x 200mm (L x W x D)
Second Bowl Size	180 x 400 x 140mm (L x W x D)
Material	18/10 Stainless Steel – 1.0mm gauge
Finish	Micro-sheen Brushed Polished Finish
Min. Base Unit	800mm
Drainer Position	Handed
Installation	Inset or Undermount

Sink	KUBE5018L/ (left hand) KUBE5018R/ (right hand)
Waste kit	Waste kit and cover included

1.0

800



540 x 440 Single Bowl Inset/Undermount Sink

Main Bowl Size	500 x 400 x 200mm (L x W x D)
Material	18/10 Stainless Steel – 1.0mm gauge
Finish	Micro-sheen Brushed Polished Finish
Min. Base Unit	600mm
Drainer Position	-
Installation	Inset or Undermount

Sink	KUBE50/
Waste kit	Waste kit and cover included

1.0

600



860 x 440mm Double Bowl Inset/ Undermount Sink

Main Bowl Size	400 x 400 x 200mm (L x W x D)
Second Bowl Size	400 x 400 x 200mm (L x W x D)
Material	18/10 Stainless Steel – 1.0mm gauge
Finish	Micro-sheen Brushed Polished Finish
Min. Base Unit	900mm
Drainer Position	-
Installation	Inset or Undermount

Sink	KUBE4040/
Waste kit	Waste kit and cover included

1.0

900

CUBIX

Featuring a 15mm radius, Cubix offers a modern solution. Providing ease of installation, Cubix can also be installed as inset or undermount with dual fixings included with every sink.



360 x 440mm Single Bowl Inset / Undermount Sink

Main Bowl Size	320 x 400 x 200mm (L x W x D)
Material	18/10 Stainless Steel - 1.0mm gauge
Finish	Micro-sheen Brushed Polished Finish
Min. Base Unit	400mm
Drainer Position	-
Installation	Inset or Undermount

Sink	CBX32/
Waste kit	Waste kit and cover included

1.0

400



460 x 440mm Single Bowl Inset / Undermount Sink

Main Bowl Size	420 x 400 x 200mm (L x W x D)
Material	18/10 Stainless Steel - 1.0mm gauge
Finish	Micro-sheen Brushed Polished Finish
Min. Base Unit	500mm
Drainer Position	-
Installation	Inset or Undermount

Sink	CBX42/
Waste kit	Waste kit and cover included

1.0

500



540 x 440mm Single Bowl Inset / Undermount Sink

Main Bowl Size	500 x 400 x 200mm (L x W x D)
Material	18/10 Stainless Steel - 1.0mm gauge
Finish	Micro-sheen Brushed Polished Finish
Min. Base Unit	600mm
Drainer Position	-
Installation	Inset or Undermount

Sink	CBX50/
Waste kit	Waste kit and cover included

1.0

600



740 x 440mm Single Bowl Inset / Undermount Sink

Main Bowl Size	700 x 400 x 200mm (L x W x D)
Material	18/10 Stainless Steel - 1.0mm gauge
Finish	Micro-sheen Brushed Polished Finish
Min. Base Unit	800mm
Drainer Position	-
Installation	Inset or Undermount

Sink	CBX70/
Waste kit	Waste kit and cover included

1.0

800



Undermount Installation



Inset Installation



Left-hand shown

560 x 440mm 1.5 Bowl Inset / Undermount Sink

Main Bowl Size	320 x 400 x 200mm (L x W x D)
Second Bowl Size	180 x 400 x 140mm (L x W x D)
Material	18/10 Stainless Steel - 1.0mm gauge
Finish	Micro-sheen Brushed Polished Finish
Min. Base Unit	600mm
Drainer Position	Handed
Installation	Inset or Undermount

Sink	CBX3218L/ (left-hand) CBX3218R/ (right-hand)
Waste kit	Waste kit and cover included

1.0

600





# QUAD

Featuring 25mm radius bowl corners, the Quad kitchen sink will perfectly complement a contemporary styled kitchen scheme.



0.9

300

## 200 x 340 Single Bowl Inset/ Undermount Sink

Main Bowl Size	160 x 300 x 120mm (L x W x D)
Material	18/10 Stainless Steel – 0.8mm gauge
Finish	Micro-sheen Brushed Polished Finish
Min. Base Unit	300mm
Drainer Position	-
Installation	Inset or Undermount

Sink	QUAD16/
Waste kit	Waste kit included



0.9

400

## 390 x 450 Single Bowl Inset/ Undermount Sink

Main Bowl Size	340 x 400 x 190mm (L x W x D)
Material	18/10 Stainless Steel – 0.8mm gauge
Finish	Micro-sheen Brushed Polished Finish
Min. Base Unit	400mm
Drainer Position	-
Installation	Inset or Undermount

Sink	QUAD34/
Waste kit	Waste kit included



## 530 x 450 Single Bowl Inset/ Undermount Sink

Main Bowl Size	480 x 400 x 200mm (L x W x D)
Material	18/10 Stainless Steel – 0.8mm gauge
Finish	Micro-sheen Brushed Polished Finish
Min. Base Unit	600mm
Drainer Position	-
Installation	Inset or Undermount

Sink	QUAD48/
Waste kit	Waste kit included

0.9

600



Right-hand shown

## 580 x 450 1.3 Bowl Inset / Undermount Sink

Main Bowl Size	340 x 400 x 190mm (L x W x D)
Second Bowl Size	160 x 300 x 120mm (L x W x D)
Material	18/10 Stainless Steel – 0.8mm gauge
Finish	Micro-sheen Brushed Polished Finish
Min. Base Unit	600mm
Drainer Position	Handed
Installation	Inset or Undermount

Sink	QUAD3416L/ (Left hand) QUAD3416R/ (Right hand)
Waste kit	Waste kit included

0.9

600



Right-hand shown

Reversible Option

## 600 x 450 1.5 Bowl Inset / Undermount Sink

Main Bowl Size	340 x 400 x 190mm (L x W x D)
Second Bowl Size	180 x 400 x 120mm (L x W x D)
Material	18/10 Stainless Steel – 0.8mm gauge
Finish	Micro-sheen Brushed Polished Finish
Min. Base Unit	600mm
Drainer Position	Reversible & Handed Options
Installation	Inset or Undermount

Sink	QUAD3418L/ (Left hand) QUAD3418R/ (Right hand) QUAD3418/ (Reversible)
Waste kit	Waste kit included

0.9

600

R



## 760 x 450 Double Bowl Inset/ Undermount Sink

Main Bowl Size	340 x 400 x 190mm (L x W x D)
Second Bowl Size	340 x 400 x 190mm (L x W x D)
Material	18/10 Stainless Steel – 0.8mm gauge
Finish	Micro-sheen Brushed Polished Finish
Min. Base Unit	800mm
Drainer Position	-
Installation	Inset or Undermount

Sink	QUAD3434/
Waste kit	Waste kit included

0.9

800

CLASSIC

The Classic undermount kitchen sink collection features an elegant curvature to the bowl design, with a 65mm radii corner, creating a discreet sink solution suited to any kitchen scheme.



185 x 370mm Single Bowl Undermount Sink

Main Bowl Size	156 x 342 x 120mm (L x W x D)
Material	18/10 Stainless Steel – 0.8mm gauge
Finish	Micro-sheen Brushed Polished Finish
Min. Base Unit	300mm
Drainer Position	-
Installation	Undermount

Sink	<b>UB15/</b>
Waste kit	Waste kit included

0.8

300



378 x 448mm Single Bowl Undermount Sink

Main Bowl Size	350 x 420 x 190mm (L x W x D)
Material	18/10 Stainless Steel – 0.8mm gauge
Finish	Micro-sheen Brushed Polished Finish
Min. Base Unit	400mm
Drainer Position	-
Installation	Undermount

Sink	<b>UB35/</b>
Waste kit	Waste kit included

0.8

400



460 x 440mm Single Bowl Undermount Sink

Main Bowl Size	420 x 400 x 190mm (L x W x D)
Material	18/10 Stainless Steel – 0.9mm gauge
Finish	Micro-sheen Brushed Polished Finish
Min. Base Unit	500mm
Drainer Position	-
Installation	Undermount

Sink	<b>UB40/</b>
Waste kit	Waste kit included

0.9

500



490 x 460mm Single Bowl Undermount Sink

Main Bowl Size	450 x 420 x 190mm (L x W x D)
Material	18/10 Stainless Steel – 0.9mm gauge
Finish	Micro-sheen Brushed Polished Finish
Min. Base Unit	600mm
Drainer Position	-
Installation	Undermount

Sink	<b>UB45/</b>
Waste kit	Waste kit included

0.9

600



Reversible shown



Left-hand shown

597 x 472mm 1.5 Bowl Undermount Sink

Main Bowl Size	350 x 420 x 190mm (L x W x D)
Second Bowl Size	156 x 342 x 120mm (L x W x D)
Material	18/10 Stainless Steel – 0.9mm gauge
Finish	Micro-sheen Brushed Polished Finish
Min. Base Unit	600mm
Drainer Position	Reversible & Handed Options
Installation	Undermount

Sink	<b>UB3515/</b> (reversible) <b>UB3515L/</b> (left-hand) <b>UB3515R/</b> (right-hand)
------	--

Waste kit	Waste kit included
-----------	--------------------

0.9

600

R



Left-hand shown

671 x 460mm 1.5 Bowl Undermount Sink

Main Bowl Size	420 x 400 x 190mm (L x W x D)
Second Bowl Size	156 x 342 x 120mm (L x W x D)
Material	18/10 Stainless Steel – 0.9mm gauge
Finish	Micro-sheen Brushed Polished Finish
Min. Base Unit	800mm
Drainer Position	Handed
Installation	Undermount

Sink	<b>UB4015L/</b> (left-hand) <b>UB4015R/</b> (right-hand)
------	---

Waste kit	Waste kit included
-----------	--------------------

0.9

800



787 x 472mm Double Bowl Undermount Sink

Main Bowl Size	350 x 420 x 190mm (L x W x D)
Second Bowl Size	350 x 420 x 190mm (L x W x D)
Material	18/10 Stainless Steel – 0.9mm gauge
Finish	Micro-sheen Brushed Polished Finish
Min. Base Unit	800mm
Drainer Position	-
Installation	Undermount

Sink	<b>UB3535/</b>
------	----------------

Waste kit	Waste kit included
-----------	--------------------

0.9

800



945 x 460mm Double Bowl Undermount Sink

Main Bowl Size	420 x 400 x 190mm (L x W x D)
Second Bowl Size	420 x 400 x 190mm (L x W x D)
Material	18/10 Stainless Steel – 0.9mm gauge
Finish	Micro-sheen Brushed Polished Finish
Min. Base Unit	1000mm
Drainer Position	-
Installation	Undermount

Sink	<b>UB4040/</b>
------	----------------

Waste kit	Waste kit included
-----------	--------------------

0.9

1000





## GRANITE SINKS

Choose a granite sink for a contemporary, sleek finished look. There are an array of different designs to choose from in a variety of different colours.

Constructed from a patented formula of 80% quartz - the toughest element of granite - and high-grade acrylic, the Igneous sink collection is literally rock solid. Its natural anti-bacterial surface repels microbes and stains which means cleaning is a dream.

RANGEMASTER  
**IGNEOUS**

### KEY FEATURES



#### DURABLE MATERIAL

Resistant against knocks, scratches, stains and heat.



#### HYGIENIC SURFACE

Non-porous surface which repels microbes and stains making the sink much easier to clean.



#### UV STABILITY

Fade free colour finish for years to come.



#### 25 YEAR WARRANTY

Rangemaster granite sinks include a 25-year warranty



#### MINIMUM CABINET SIZE

Sink options available to suit 450mm, 500mm, 600mm, 800mm and 1000mm cabinets.



#### REVERSIBLE INSTALLATION

The sink can be fitted with a left-hand or right-hand drainer option.





# PRATO

Divided into three different working levels to maximise the space available within the bowl to provide a functional compact workstation which will help the aid of food preparation for the everyday culinary chef. Sliding accessories (cutting board, colander and flex drainer) can be positioned on three levels dependent on your food preparation needs.

Available Colours

AW

Arctic White

CH

Charcoal

CO

Concrete

PE

Pebble

Pebble (PE) finish shown



600

Arctic White (AW) finish shown

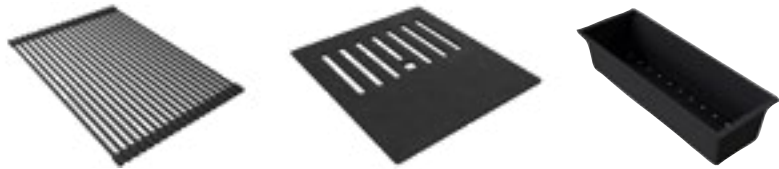


800

## 570 x 510mm Single Bowl Inset Sink - Supplied with Accessories

Main Bowl Size	506 x 386 x 200mm (L x W x D)
Material	Igneous Granite
Finish	Arctic White (AW), Charcoal (CH), Concrete (CO) or Pebble (PE)
Min. Base Unit	600mm
Drainer Position	-

Sink	PRA570__/_
Waste kit	Waste kit included



All accessories included with Prato sink

\*Replace '\_\_\_' in the sink code with your chosen colour suffix.  
AW - Arctic White, CH - Charcoal, CO - Concrete, PE - Pebble

# TOPAZ

Featuring sharp geometric bowls and a classic lined drainer design, the Topaz range will look equally at home in a contemporary or traditional kitchen.

Available Colours

AW

Arctic White

CH

Charcoal

CO

Concrete

PE

Pebble

Pebble (PE) finish shown



Charcoal (CH) finish shown



Concrete (CO) finish shown



\*Replace '\_\_\_' in the sink code with your chosen colour suffix.  
AW - Arctic White, CH - Charcoal, CO - Concrete, PE - Pebble



## 860 x 510mm Compact Single Bowl Inset Sink

Main Bowl Size	330 x 421 x 200mm (L x W x D)
Material	Igneous Granite
Finish	Arctic White (AW), Charcoal (CH), Concrete (CO) or Pebble (PE)
Min. Base Unit	450mm
Drainer Position	Reversible

Sink	TOP860__/_
Waste kit	Waste kit included

450

↑ R ↓

## 1000 x 510mm Single Bowl Inset Sink

Main Bowl Size	478 x 421 x 200mm (L x W x D)
Material	Igneous Granite
Finish	Arctic White (AW), Charcoal (CH), Concrete (CO) or Pebble (PE)
Min. Base Unit	600mm
Drainer Position	Reversible

Sink	TOP1001__/_
Waste kit	Waste kit included

600

↑ R ↓

## 1000 x 510mm 1.5 Bowl Inset Sink

Main Bowl Size	319 x 421 x 200mm (L x W x D)
Second Bowl Size	150 x 421 x 140mm (L x W x D)
Material	Igneous Granite
Finish	Arctic White (AW), Charcoal (CH), Concrete (CO) or Pebble (PE)
Min. Base Unit	600mm
Drainer Position	Reversible

Sink	TOP1002__/_
Waste kit	Waste kit included

600

↑ R ↓





# ANDESITE

Encompassing a simple yet sleek drainer pattern design and featuring large geometric bowls with low radius corners, the Andesite kitchen sink offers a stunning design for a trend conscious home.

Available Colours

CW

Crystal White

AS

Ash Black

DG

Dove Grey\*

SN

Stone\*\*

\*AND860 Only, \*\*AND1051 & AND1052 Only



# ELEMENTS

Elements combines style with functionality; its recessed drainer ensures water spillage is kept to a minimum, while its large square look bowls add contemporary design to your kitchen style.

Available Colours

CW

Crystal White

AS

Ash Black

DG

Dove Grey

Crystal White (CW) finish shown



Dove Grey (DG) finish shown



## 1000 x 500mm Single Bowl Inset Sink

Main Bowl Size	480 x 420 x 180mm (L x W x D)
Material	Igneous Granite
Finish	Ash Black (AS), Crystal White (CW) or Dove Grey (DG)
Min. Base Unit	600mm
Drainer Position	Reversible

Sink	ELE1051__/_
Waste kit	Waste kit included
Accessories	Bamboo Chopping Board KA10/

## 1000 x 500mm 1.5 Bowl Inset Sink

Main Bowl Size	380 x 420 x 180mm (L x W x D)
Second Bowl Size	125 x 282 x 120mm (L x W x D)
Material	Igneous Granite
Finish	Ash Black (AS), Crystal White (CW) or Dove Grey (DG)
Min. Base Unit	600mm
Drainer Position	Reversible

Sink	ELE1052__/_
Waste kit	Waste kit included
Accessories	Bamboo Chopping Board KA10/

\*Replace '\_\_\_' in the sink code with your chosen colour suffix.  
CW - Crystal White, AS - Ash Black, DG - Dove Grey

Crystal White (CW) finish shown



Ash Black (AS) finish shown



Stone (SN) finish shown



\*Replace '\_\_\_' in the sink code with your chosen colour suffix.  
CW - Crystal White, AS - Ash Black, DG - Dove Grey, SN - Stone

## 860 x 500mm Single Bowl Inset Sink

Main Bowl Size	347 x 430 x 200mm (L x W x D)
Material	Igneous Granite
Finish	Ash Black (AS), Crystal White (CW) or Dove Grey (DG)
Min. Base Unit	450mm
Drainer Position	Reversible

Sink	AND860__/_
Waste kit	Waste kit included

450

R

## 1000 x 500mm Single Bowl Inset Sink

Main Bowl Size	480 x 430 x 200mm (L x W x D)
Material	Igneous Granite
Finish	Ash Black (AS), Crystal White (CW) and Stone (SN)
Min. Base Unit	600mm
Drainer Position	Reversible

Sink	AND1051__/_
Waste kit	Waste kit included

600

R

## 1000 x 500mm 1.5 Bowl Inset Sink

Main Bowl Size	345 x 430 x 200mm (L x W x D)
Second Bowl Size	155 x 340 x 146mm (L x W x D)
Material	Igneous Granite
Finish	Ash Black (AS), Crystal White (CW) and Stone (SN)
Min. Base Unit	600mm
Drainer Position	Reversible

Sink	AND1052__/_
Waste kit	Waste kit included

600

R

# LOA

The Loa sink is available in four colour options and features a sleek, modern design that is ideal for contemporary kitchens.

Available Colours

AW

Arctic White

CH

Charcoal

CO

Concrete

PE

Pebble

## 860 x 500mm Compact Single Bowl Inset Sink

Main Bowl Size	330 x 435 x 180mm (L x W x D)
Material	Igneous Granite
Finish	Arctic White (AW), Charcoal (CH), Concrete (CO) or Pebble (PE)
Min. Base Unit	450mm
Drainer Position	Reversible



Sink	LOA860__/_
Waste kit	Waste kit included

## 1000 x 500mm Single Bowl Inset Sink

Main Bowl Size	480 x 435 x 180mm (L x W x D)
Material	Igneous Granite
Finish	Arctic White (AW), Charcoal (CH), Concrete (CO) or Pebble (PE)
Min. Base Unit	600mm
Drainer Position	Reversible



Sink	LOA1051__/_
Waste kit	Waste kit included

## 1000 x 500mm 1.5 Bowl Inset Sink

Main Bowl Size	360 x 434 x 180mm (L x W x D)
Second Bowl Size	145 x 300 x 128mm (L x W x D)
Material	Igneous Granite
Finish	Arctic White (AW), Charcoal (CH), Concrete (CO) or Pebble (PE)
Min. Base Unit	600mm
Drainer Position	Reversible



Sink	LOA1052__/_
Waste kit	Waste kit included

## 1160 x 500mm Double Bowl Inset Sink

Main Bowl Size	338 x 435 x 180mm (L x W x D)
Second Bowl Size	338 x 435 x 180mm (L x W x D)
Material	Igneous Granite
Finish	Arctic White (AW), Charcoal (CH), Concrete (CO) or Pebble (PE)
Min. Base Unit	800mm
Drainer Position	Reversible



Sink	LOA1152__/_
Waste kit	Waste kit included

# PARAGON

Go under-mounted for a sleek, seamless worksurface. Boasting a modern, geometric design, the Paragon kitchen sink is the perfect match for composite worksurfaces.

Available Colours

CW

Crystal White

AS

Ash Black

DG

Dove Grey\*

CG

Grey\*\*

\*PAR3115 Only, \*\*PAR4553 & PAR3641 Only

## 533 x 457mm Single Bowl Inset/Undermount Sink

Main Bowl Size	469 x 393 x 209mm (L x W x D)
Material	Igneous Granite
Finish	Ash Black (AS), Crystal White (CW) or Grey (CG)
Min. Base Unit	600mm
Drainer Position	-
Installation	Inset or Undermount



Sink	PAR4553__/_
Waste kit	Waste kit included

## 550 x 430mm 1.5 Bowl Inset/Undermount Sink

Main Bowl Size	310 x 370 x 200mm (L x W x D)
Second Bowl Size	152 x 370 x 130mm (L x W x D)
Material	Igneous Granite
Finish	Ash Black (AS), Crystal White (CW) or Dove Grey (DG)
Min. Base Unit	600mm
Drainer Position	Right hand
Installation	Inset or Undermount



Sink	PAR3115__/_
Waste kit	Waste kit included

## 824 x 481mm Double Bowl Undermount Sink

Main Bowl Size	362 x 395 x 241mm (L x W x D)
Second Bowl Size	362 x 395 x 241mm (L x W x D)
Material	Igneous Granite
Finish	Ash Black (AS), Crystal White (CW) or Grey (CG)
Min. Base Unit	900mm
Drainer Position	-
Installation	Undermount



Sink	PAR3641__/_
Waste kit	Waste kit included

Arctic White (AW) finish shown



Pebble (PE) finish shown



Charcoal (CH) finish shown



Concrete (CO) finish shown



Crystal White (CW) finish shown



Ash Black (AS) finish shown



Grey (CG) finish shown



\*Replace '\_\_\_' in the sink code with your chosen colour suffix.  
AW – Arctic White, CH – Charcoal, CO - Concrete, PE - Pebble

\*Replace '\_\_\_' in the sink code with your chosen colour suffix.  
CW – Crystal White, AS – Ash Black, DG - Dove Grey, CG - Grey



ORIDIAN INSET

Create a modern finished look with the addition of an Oridian granite bowl. The Oridian collection features large bowls offering ample space to wash large pots and pans, available in separate inset and undermount collections.

Arctic White (AW) finish shown



570 x 500mm Single Bowl Inset Sink

Main Bowl Size	500 x 400 x 200mm (L x W x D)
Material	Igneous Granite
Finish	Arctic White (AW), Charcoal (CH), Concrete (CO) or Pebble (PE)
Min. Base Unit	600mm
Drainer Position	-
Installation	Inset

600

Sink	ORI570__/_
Waste kit	Waste kit included

Charcoal (CH) finish shown



790 x 500mm Single Bowl Inset Sink

Main Bowl Size	720 x 400 x 200mm (L x W x D)
Material	Igneous Granite
Finish	Arctic White (AW), Charcoal (CH), Concrete (CO) or Pebble (PE)
Min. Base Unit	800mm
Drainer Position	-
Installation	Inset

800

Sink	ORI7901__/_
Waste kit	Waste kit included

Concrete (CO) finish shown



590 x 500mm 1.5 Bowl Inset Sink

Main Bowl Size	325 x 400 x 200mm (L x W x D)
Second Bowl Size	160 x 400 x 155mm (L x W x D)
Material	Igneous Granite
Finish	Arctic White (AW), Charcoal (CH), Concrete (CO) or Pebble (PE)
Min. Base Unit	600mm
Drainer Position	Left hand
Installation	Inset

600

Sink	ORI5902__/_
Waste kit	Waste kit included

Pebble (PE) finish shown



790 x 500mm Double Bowl Inset Sink

Main Bowl Size	343 x 395 x 210mm (L x W x D)
Second Bowl Size	343 x 395 x 210mm (L x W x D)
Material	Igneous Granite
Finish	Arctic White (AW), Charcoal (CH), Concrete (CO) or Pebble (PE)
Min. Base Unit	800mm
Drainer Position	-
Installation	Inset

800

Sink	ORI7902__/_
Waste kit	Waste kit included

\*Replace '\_\_\_' in the sink code with your chosen colour suffix.  
AW – Arctic White, CH – Charcoal, CO - Concrete, PE - Pebble

ORIDIAN UNDERMOUNT

Available Colours



Arctic White (AW) finish shown



540 x 440mm Single Bowl Undermount Sink

Main Bowl Size	500 x 400 x 200mm (L x W x D)
Material	Igneous Granite
Finish	Arctic White (AW), Charcoal (CH), Concrete (CO) or Pebble (PE)
Min. Base Unit	600mm
Drainer Position	-
Installation	Undermount

600

Sink	ORIUN540__/_
Waste kit	Waste kit included

Charcoal (CH) finish shown



760 x 440mm Single Bowl Undermount Sink

Main Bowl Size	720 x 400 x 200mm (L x W x D)
Material	Igneous Granite
Finish	Arctic White (AW), Charcoal (CH), Concrete (CO) or Pebble (PE)
Min. Base Unit	800mm
Drainer Position	-
Installation	Undermount

800

Sink	ORIUN7601__/_
Waste kit	Waste kit included

Concrete (CO) finish shown



560 x 440mm 1.5 Bowl Undermount Sink

Main Bowl Size	325 x 400 x 200mm (L x W x D)
Second Bowl Size	160 x 400 x 155mm (L x W x D)
Material	Igneous Granite
Finish	Arctic White (AW), Charcoal (CH), Concrete (CO) or Pebble (PE)
Min. Base Unit	600mm
Drainer Position	Left hand
Installation	Undermount

600

Sink	ORIUN5602__/_
Waste kit	Waste kit included

Pebble (PE) finish shown



760 x 435mm Double Bowl Undermount Sink

Main Bowl Size	343 x 395 x 220mm (L x W x D)
Second Bowl Size	343 x 395 x 220mm (L x W x D)
Material	Igneous Granite
Finish	Arctic White (AW), Charcoal (CH), Concrete (CO) or Pebble (PE)
Min. Base Unit	800mm
Drainer Position	-
Installation	Undermount

800

Sink	ORIUN7602__/_
Waste kit	Waste kit included

\*Replace '\_\_\_' in the sink code with your chosen colour suffix.  
AW – Arctic White, CH – Charcoal, CO - Concrete, PE - Pebble



# FIRE-CLAY CERAMIC SINKS

The kitchen sink is one of the most used items of your kitchen, so why not add a statement piece to enhance the overall look of your space?

With the addition of a fire-clay ceramic sink, you are guaranteed a sink which will retain its high-gloss colour and shine for its lifetime.

Our ceramic sinks are manufactured using clay sourced from Cornwall, UK. Moulded and fired at high temperatures, our ceramic sinks are robust and hygienic thanks to the high-gloss glaze finish with each sink.

There are a choice of inset, undermount and sit-on Belfast options available in a variety of different styles. Thanks to its natural high-gloss finish, a fire-clay ceramic sink beautifully complements any style of worktop surface.

The Hartland inset Belfast range provides the traditional and sought-after look of a Belfast sink, without the need to invest in a solid worktop as its inset design is compatible with any type of work surface including laminate.



## KEY FEATURES

-  **EASY CLEAN SURFACE**  
Thanks to its smooth glazed surface, a Rangemaster fire-clay ceramic sink is easy to clean as microbes and stains just simply wipe away.
-  **SUPERIOR STRENGTH**  
Thanks to the high gloss glazed finish, Rangemaster ceramic sinks are highly resistant against heat, stains and scratches.
-  **EXPANDED COLOUR RANGE**  
Choose from high gloss White or Matt Black

-  **10 YEAR WARRANTY**  
Rangemaster fire-clay ceramic sinks include a 10-year warranty.
-  **MINIMUM CABINET SIZE**  
Sink options available to suit 450mm, 500mm, 600mm, 800mm and 1000mm cabinets.
-  **REVERSIBLE INSTALLATION**  
The sink can be fitted with a left-hand or right-hand drainer option.





## ARLINGTON

Modelled from our flagship stainless steel range, Arlington, a new ceramic collection encompasses its iconic design styling and is offered to the market as a reversible solution providing flexibility.



985 x 500mm Single Bowl Inset Sink

Main Bowl Size	424 x 374 x 193mm (L x W x D)
Material	Fire-Clay Ceramic
Finish	Gloss White
Min. Base Unit	600mm
Drainer Position	Reversible

Sink CAR1051WH/

Waste kit Waste kit included



985 x 500mm 1.5 Bowl Inset Sink

Main Bowl Size	334 x 375 x 195mm (L x W x D)
Second Bowl Size	172 x 260 x 145mm (L x W x D)
Material	Fire-Clay Ceramic
Finish	Gloss White
Min. Base Unit	600mm
Drainer Position	Reversible

Sink CAR1052WH/

Waste kit Waste kit included



## AUSTELL

A modern design with bold lines, the Austell sits at home within a traditional or modern style kitchen. Now available in a new Matt Black finish.

Available Colours



1000 x 500mm Single Bowl Inset Sink

Main Bowl Size	449 x 415 x 190mm (L x W x D)
Material	Fire-Clay Ceramic
Finish	Gloss White (WH) or Matt Black (MB)
Min. Base Unit	600mm
Drainer Position	Reversible

Sink CAU10101WH/ (gloss white)  
CAU10101MB/ (matt black)

Waste kit Waste kit included



1000 x 500mm 1.5 Bowl Inset Sink

Main Bowl Size	340 x 415 x 190mm (L x W x D)
Second Bowl Size	170 x 300 x 142mm (L x W x D)
Material	Fire-Clay Ceramic
Finish	Gloss White (WH) or Matt Black (MB)
Min. Base Unit	600mm
Drainer Position	Reversible

Sink CAU10102WH/ (gloss white)  
CAU10102MB/ (matt black)

Waste kit Waste kit included





## RUSTIC

Offering a modern, farmhouse feel, Rustic kitchen sinks are designed to cater the needs of an enthusiastic chef.



1000 x 500mm Single Bowl Inset Sink

Main Bowl Size	460 x 390 x 195mm (L x W x D)
Material	Fire-Clay Ceramic
Finish	Gloss White
Min. Base Unit	600mm
Drainer Position	Reversible

Sink	CRT10101WH/
Waste kit	Waste kit included



1000 x 500mm 1.5 Bowl Inset Sink

Main Bowl Size	360 x 390 x 195mm (L x W x D)
Second Bowl Size	147 x 260 x 120mm (L x W x D)
Material	Fire-Clay Ceramic
Finish	Gloss White
Min. Base Unit	600mm
Drainer Position	Reversible

Sink	CRT10202WH/
Waste kit	Waste kit included



## TENBY

Classically designed, the Tenby collection is available in single and 1.5 bowl options. The compact 850 x 500mm variant fits smaller 500mm cabinet sizes - ideal for smaller kitchen spaces.



850 x 500mm Single Bowl Inset Sink

Main Bowl Size	340 x 370 x 200mm (L x W x D)
Material	Fire-Clay Ceramic
Finish	Gloss White
Min. Base Unit	500mm
Drainer Position	Reversible

Sink	CTE8501WH/
Waste kit	Waste kit included



997 x 497mm 1.5 Bowl Inset Sink

Main Bowl Size	330 x 370 x 215mm (L x W x D)
Second Bowl Size	135 x 253 x 128mm (L x W x D)
Material	Fire-Clay Ceramic
Finish	Gloss White
Min. Base Unit	600mm
Drainer Position	Reversible

Sink	CTE10102WH/
Waste kit	Waste kit included





# HARTLAND

Thanks to its inset installation method, you can achieve a Belfast look sink with any worktop material type with Hartland. Its deep apron front profile adds a design statement in any contemporary or traditional style of kitchen.



622 x 494mm Apron Front Belfast Inset Sink

Main Bowl Size	540 x 401 x 186mm (L x W x D)
Overall Height:	170mm (apron front)
Material	Fire-Clay Ceramic
Finish	Gloss White
Min. Base Unit	600mm
Drainer Position	-

Sink	CHA622WH/
Waste kit	Waste kit included



# RUSTIQUE

Create a modern finished look with the addition of a Rustique fire-clay ceramic bowl. Fitted as either an inset or undermount sink, the Rustique will provide a real focal point in the kitchen and contrast excellently to all colours and finishes.



234 x 460mm Single Bowl Inset / Undermount Sink

Main Bowl Size	174 x 400 x 195mm (L x W x D)
Material	Fire-Clay Ceramic
Finish	Gloss White
Min. Base Unit	300mm
Drainer Position	-
Installation	Inset or Undermount

Sink	CRUB1740WH/
Waste kit	Waste kit included



445mm Ø Single Bowl Inset / Undermount Sink

Main Bowl Size	385mm Ø
Material	Fire-Clay Ceramic
Finish	Gloss White
Min. Base Unit	500mm
Drainer Position	-
Installation	Inset or Undermount

Sink	CRUB385WH/
Waste kit	Waste kit included

RUSTIQUE



462 x 462mm Single Bowl Inset/ Undermount Sink

Main Bowl Size	400 x 400 x 195mm (L x W x D)
Material	Fire-Clay Ceramic
Finish	Gloss White
Min. Base Unit	500mm
Drainer Position	-
Installation	Inset or Undermount

Sink	CRUB4040WH/
Waste kit	Waste kit included

500



557 x 430mm Single Bowl Inset/ Undermount Sink

Main Bowl Size	494 x 367 x 194mm (L x W x D)
Material	Fire-Clay Ceramic
Finish	Gloss White
Min. Base Unit	600mm
Drainer Position	-
Installation	Inset or Undermount

Sink	CRUB4936WH/
Waste kit	Waste kit included

600



598 x 462mm Single Bowl Inset/Undermount Sink

Main Bowl Size	536 x 401 x 195mm (L x W x D)
Material	Fire-Clay Ceramic
Finish	Gloss White
Min. Base Unit	600mm (inset) 700mm (undermount)
Drainer Position	-
Installation	Inset or Undermount

Sink	CRUB5340WH/
Waste kit	Waste kit included

600

700

Undermount



557 x 430mm 1.5 Bowl Inset / Undermount Sink

Main Bowl Size	330 x 367 x 189mm (L x W x D)
Second Bowl Size	146 x 367 x 189mm (L x W x D)
Material	Fire-Clay Ceramic
Finish	Gloss White
Min. Base Unit	600mm
Drainer Position	Right-hand
Installation	Inset or Undermount

Sink	CRUB3315WH/
Waste kit	Waste kit included

600



600 x 522mm 1.5 Bowl Inset / Undermount Sink

Main Bowl Size	360 x 460 x 195mm (L x W x D)
Second Bowl Size	162 x 300 x 175mm (L x W x D)
Material	Fire-Clay Ceramic
Finish	Gloss White
Min. Base Unit	600mm (inset) 700mm (undermount)
Drainer Position	Right-hand
Installation	Inset or Undermount

Sink	CRUB3314WH/
Waste kit	Waste kit included

600

Inset

700

Undermount



595 x 460mm 1.5 Bowl Inset / Undermount Sink

Main Bowl Size	337 x 400 x 196mm (L x W x D)
Second Bowl Size	183 x 400 x 176mm (L x W x D)
Material	Fire-Clay Ceramic
Finish	Gloss White
Min. Base Unit	600mm (inset) 700mm (undermount)
Drainer Position	Right-hand
Installation	Inset or Undermount

Sink	CRUB3216WH/
Waste kit	Waste kit included

600

Inset

700

Undermount



New 796 x 462mm Double Bowl Inset / Undermount Sink

Main Bowl Size	431 x 401 x 196mm (L x W x D)
Second Bowl Size	286 x 401 x 196mm (L x W x D)
Material	Fire-Clay Ceramic
Finish	Gloss White
Min. Base Unit	900mm
Drainer Position	Right-hand
Installation	Inset or Undermount

Sink	CRUB4329WH/
Waste kit	Waste kit included

900





# FARMHOUSE

Created seamlessly to blend modern living with a traditional country kitchen, the Farmhouse Belfast kitchen sink is a stylish alternative to a classic design.



595 x 455mm Single Bowl Sit-on Belfast Sink

Main Bowl Size	535 x 395 x 222mm (L x W x D)
Overall Height	252mm
Material	Fire-Clay Ceramic
Finish	Gloss White
Min. Base Unit	600mm
Drainer Position	Reversible

Sink	CFBL595WH/ - 60mm waste CFBL5959OWH/ - 90mm waste <i>New</i>
Waste kit	Waste kit included



*New* 795 x 460mm Single Bowl Sit-on Belfast Sink

Main Bowl Size	735 x 400 x 197mm (L x W x D)
Overall Height	220mm
Material	Fire-Clay Ceramic
Finish	Gloss White
Min. Base Unit	800mm
Drainer Position	-

Sink	CFBL795WH/
Waste kit	Waste kit included



793 x 491mm Double Bowl Sit-on Belfast Sink

Main Bowl Size	366 x 450 x 195mm (L x W x D)
Second Bowl Size	366 x 450 x 195mm (L x W x D)
Overall Height	220mm
Material	Fire-Clay Ceramic
Finish	Gloss White
Min. Base Unit	800mm
Drainer Position	-

Sink	CFBL800WH/
Waste kit	Waste kit included



895 x 460mm Double Bowl Sit-on Belfast Sink

Main Bowl Size	417 x 420 x 194mm (L x W x D)
Second Bowl Size	417 x 420 x 194mm (L x W x D)
Overall Height	220 mm
Material	Fire-Clay Ceramic
Finish	Gloss White
Min. Base Unit	900mm
Drainer Position	-

Sink	CFBL900WH/
Waste kit	Waste kit included



# CLASSIC BELFAST

The Classic Belfast kitchen sink features a solid design which typifies the very heart of the home. Finished in a high lustre white gloss, complete with a traditionally styled weir waste overflow.



595 x 455mm Single Bowl Sit-on Belfast Sink

Main Bowl Size	525 x 385 x 215mm (L x W x D)
Overall Height	250mm
Material	Fire-Clay Ceramic
Finish	Gloss White
Min. Base Unit	600mm
Drainer Position	Reversible

Sink	CCBL595WH/
Waste kit	Waste Kit sold separately, please order WKIT13/



800 x 500mm Double Bowl Sit-on Belfast Sink

Main Bowl Size	365 x 450 x 200mm (L x W x D)
Second Bowl Size	365 x 450 x 200mm (L x W x D)
Overall Height	220mm
Material	Fire-Clay Ceramic
Finish	Gloss White
Min. Base Unit	800mm
Drainer Position	-

Sink	CDB800WH/
Waste kit	Waste Kit sold separately, please order WKIT24/





## New SANDWOOD

The newly introduced Sandwood Fire-clay Sink elegantly combines functionality with classic country charm, showcasing a sit-on base that enhances the aesthetic appeal of any kitchen.



### 597 x 630mm Sit-on Butler Sink

Main Bowl Size	531 x 418 x 191mm (L x W x D)
Overall Height	220mm
Material	Fire-Clay Ceramic
Finish	Gloss White
Min. Base Unit	600mm
Drainer Position	-

Sink	SAN597WH/
Waste kit	Waste kit included

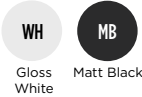


600

## GRANGE

The Grange Belfast features slim profile walls with sharper radius corners - offering a contemporary sit-on Belfast option which benefits from a slightly larger bowl.

Available Colours



600

↑ R ↓

### 595 x 455 Single Bowl Sit-on Belfast Sink

Main Bowl Size	555 x 415 x 227mm (L x W x D)
Overall Height	250mm
Material	Fire-Clay Ceramic
Finish	Gloss White (WH) or Matt Black (MB)
Min. Base Unit	600mm
Drainer Position	Reversible

Sink	CGR595WH/ Gloss White CGR595MB/ Matt Black
------	---

Waste kit	Waste kit included
-----------	--------------------

## BELFAST

Choose the Belfast for a contemporary finished look; featuring a large bowl offering ample space to wash large pots and pans.



### 595 x 475mm Single Bowl Sit-on Belfast Sink

Main Bowl Size	550 x 420 x 200mm(L x W x D)
Overall Height	220mm
Material	Fire-Clay Ceramic
Finish	Gloss White
Min. Base Unit	600mm
Drainer Position	-

Sink	CBL595WH/
Waste kit	Waste Kit sold separately, please order WKIT15/



600





# FINISHING TOUCHES

Complement your kitchen sink with a Rangemaster tap, waste disposal unit and compatible accessory. Our taps and accessories have been designed to help assist with daily tasks so that cooking and cleaning are made easier.

All of our taps are manufactured from high-grade brass and finished with state of the art long-lasting electrolytic coatings. A ceramic disc cartridge is also included with every tap which provides smooth handle movement and ensures the user has full control over the flow and temperature of the water.



## KEY FEATURES



### 5 YEAR WARRANTY

Rangemaster taps include a 5-year warranty.



### ANTI-SPLASH SPOUT

The spout features a honeycomb aerator design which mixes air with water to emit a soft 'champagne like' water flow with no splash.



### PULL-OUT HOSE

For ultimate food preparation and cleaning results, choose a tap with a pull out hose. The majority of our designs feature a retractable hose which sits discreetly within the tap not altering its appearance from a standard tap.



### WATER PRESSURE

The flow of water is determined from the water pressure available in your home, identifying the type of plumbing system already installed will help you choose a tap to suit your water pressure.



### ALL PRESSURE

The majority of our taps have been designed to work with all plumbing systems, including low pressure hot water tanks. Look for the 'A' symbol opposite across our range, which highlights compatibility with all water systems from 0.2 bar onwards.



### MEDIUM PRESSURE

Some of our taps require plumbing systems with a higher bar pressure of 0.5 bar onwards, look for the 'M' symbol opposite against these types of taps.



### HIGH PRESSURE

Taps with a 'H' symbol will require a plumbing system with 1.0 bar or higher when installing.



# PULL OUT TAPS

Choose a kitchen tap with pull out function for ultimate food preparation and cleaning results. Thanks to its extendable hose, larger pots and pans which cannot fit easily in standard sinks can be cleaned easily. The majority of our designs feature a retractable hose which sits discreetly within the tap not altering its appearance from a standard tap.



## New Pro Spray Pull Out Tap

Turn your sink into the ultimate workstation with the new Pro Spray kitchen tap. Thanks to its flexible hose, larger pots and pans which cannot fit easily into standard sinks, can be cleaned easily.

TPROSLPOCM/ Chrome

Tap height: 546mm  
Spout reach: 232mm  
Hose length: 600mm  
Min. pressure: 0.5 bar

## Aquatrend Spring Pull Out Tap

Sitting tall and proud, the Aquatrend Spring creates a bold statement piece in your kitchen.

TRE1SPRCM/ Chrome

Tap height: 528mm  
Spout reach: 188mm  
Hose length: 342mm  
Min. pressure: 0.5 bar

## Aquadisc 5 Pull Out Tap

Featuring a modern quad neck design, the Aquadisc 5 subtly hides its additional pull-out function within the spout design.

TAD5POCM/ Chrome

Tap height: 275mm  
Spout reach: 218mm  
Hose length: 392mm  
Min. pressure: 0.75 bar

# FILTER TAPS

Rangemaster's filter taps deliver crystal clear, clean water thanks to the high quality carbon filter included, which reduces impurities and delivers fresh tasting water at the push of a handle. Reduce your plastic usage by investing in a filtered tap at home, each filter cartridge will deliver 2,500 litres of water and can be easily replaced when needed.



## Cruciform Filter Tap

A modern alternative with its sweeping swan neck and contemporary handle design.

TSA5CM/ Chrome  
TSA5BF/ Brushed

Tap height: 392mm  
Spout reach: 216mm  
Min. pressure: 0.2 bar

## Aquatrend Pull Out Tap

Featuring a unique pin handle design and dual lever control function.

TRE1POCM/ Chrome  
TRE1POBF/ Brushed

Tap height: 388mm  
Spout reach: 220mm  
Hose length: 410mm  
Min. pressure: 1.5 bar

## Aquatrend Single Lever Pull Out Tap

Featuring a unique pin handle design and single lever control function.

TRE1SLPOCM/ Chrome  
TRE1SLPOBF/ Brushed

Tap height: 390mm  
Spout reach: 220mm  
Hose length: 410mm  
Min. pressure: 1.5 bar



# SINGLE LEVER TAPS

Operate your tap single-handed while maintaining maximum control over the temperature and flow of the water thanks to the ceramic disc cartridge included, which has been designed to ensure a smooth handle operation is maintained when turned.



## *New* Kube Single Lever Tap

The Kube single lever tap features modern straight lines and a distinct square body designed to create a statement piece in any contemporary designed kitchen.

TKUBESLCM/ Chrome  
TKUBESLMB/ Matt Black



Tap height: 320mm  
Spout reach: 218mm  
Min. pressure: 0.5 bar



## Conical Single Lever Tap

A uniquely shaped body paired with a quad spout design which creates an ultimate modern design piece.

TCOSL1CM/ Chrome  
TCOSL1BF/ Brushed  
TCOSL1MB/ Matt Black  
TCOSL1BB/ Brushed Brass



Tap height: 294mm  
Spout reach: 212mm  
Min. pressure: 0.6 bar



## Aquatrend Single Lever Tap

Aquatrend stands tall to create a focal point in your kitchen, now available in two new additional finishes.

TRE1SLCM/ Chrome  
TRE1SLBF/ Brushed  
TRE1SLMB/ Matt Black  
TRE1SLBB/ Brushed Brass



Tap height: 390mm  
Spout reach: 216mm  
Min. pressure: 0.4 bar



## Hemlock Single Lever Tap

Exquisitely finished, the Hemlock tap range features a delicate knurled handle design paired with a sweeping neck spout design.

THEMSLPG/ Polished Gold  
THEMSLMB/ Matt Black  
THEMSLBN/ Brushed Nickel  
THEMSLCM/ Chrome



Tap height: 412mm  
Spout reach: 216mm  
Min. pressure: 0.75 bar



## Igneous Single Lever Tap

A stylish and practical kitchen tool that combines modern design with superior functionality. Its sleek single-lever handle allows for precise control over water flow and temperature, making it easy to use.

TIGNSLAS/ Ash Black (AS)  
TIGNSLCW/ Crystal White (CW)  
TIGNSLDG/ Dove Grey (DG)



Tap height: 360mm  
Spout reach: 181mm  
Min. Pressure: 0.7 bar



## Aquaflow Single Lever Tap

A compact solution where space may be restricted.

TAF1CM/ Chrome

Tap height: 163mm  
Spout reach: 230mm  
Min. Pressure: 0.2 bar



DUAL LEVER TAPS



Waverley Bridge Tap

Exuding Farmhouse luxe, with its unique handle design featuring intricate contouring detail and its classic spout design, the Waverley kitchen is the perfect accompaniment to a fire-clay kitchen sink.

TWAVBRAB/ Antique Brass  
TWAVBREB/ English Bronze  
TWAVBRPN/ Polished Nickel

Tap height: 266mm  
Spout reach: 228mm  
Min. pressure: 0.3 bar



Waverley Dual Lever Tap

The Waverley Dual Lever exudes distinct elegance, featuring a beautifully crafted handle design. A perfect addition to the aesthetics of any classic kitchen.

TWAVDLAB/ Antique Brass  
TWAVDLEB/ English Bronze  
TWAVDLPN/ Polished Nickel

Tap height: 295mm  
Spout reach: 228mm  
Min. pressure: 0.4 bar



Aspire Dual Lever Tap

Featuring a modern flat handle and spout design for a sleek, contemporary finished look.

TAI1CM/ Chrome  
Tap height: 365mm  
Spout reach: 231mm  
Min. pressure: 0.4 bar



*New* Kube Dual Lever Tap

The Kube dual lever tap features modern straight lines; perfectly suiting our Kube stainless steel sink range.

TKUBEDLCM/ Chrome  
TKUBEDLMB/ Matt Black

Tap height: 295mm  
Spout reach: 217mm  
Min. pressure: 0.5 bar



*New* Quad Dual Lever Tap

Designed with a contemporary edge, the new Quad tap seamlessly complements the Quad undermount range and perfectly suits any modern kitchen.

TQUADDLCM/ Chrome  
Tap height: 341mm  
Spout reach: 200mm  
Min. pressure: 0.5 bar



Belfast Traditional Bridge Tap

Classically designed to complement a traditional Farmhouse Belfast sink, available in two colour finishes.

TBL1CM/ Chrome  
TBL1BF/ Brushed  
Tap height: 368mm  
Spout reach: 190mm  
Min. pressure: 0.1 bar



Belfast Monobloc Dual Lever Tap

The Belfast Monobloc complements Belfast style sinks perfectly thanks to its compact size and traditional styling.

TBM1AB/ Antique Brass  
TBM1CM/ Chrome

Tap height: 343mm  
Spout reach: 193mm  
Min. pressure: 0.3 bar



Conical Dual Lever Tap

A uniquely shaped body paired with a square spout design which creates an ultimate modern design piece.

TCO1CM/ Chrome  
TCO1BF/ Brushed  
TCO1MB/ Matt Black  
TCO1BB/ Brushed Brass

Tap height: 294mm  
Spout reach: 212mm  
Min. pressure: 0.3 bar



Hemlock Dual Lever Tap

A sleek and impressive tap that will stand out in your kitchen. Designed to offer high end style which transforms your traditional kitchen.

THEMDLPG/ Polished Gold  
THEMDLMB/ Matt Black  
THEMDLBN/ Brushed Nickel  
THEMDLCM/ Chrome

Tap height: 405mm  
Spout reach: 216mm  
Min. pressure: 0.4 bar



*New* Aquaclassic Bridge Tap

With the choice of white or chrome handles, the Aquaclassic Bridge tap beautifully complements a ceramic farmhouse kitchen sink.

TAQCLASSBRAB/WH  
Antique Brass - White Handles  
TAQCLASSBRBF/BF  
Brushed  
TAQCLASSBRCM/CM  
Chrome  
TAQCLASSBRCM/WH  
Chrome - White Handles

Tap height: 359mm  
Spout reach: 197mm  
Min. pressure: 0.5 bar



Cruciform Dual Lever Tap

An elegant design with minimalist styling and softened edges.

TCF2CM/ Chrome  
TCF2BF/ Brushed  
Tap height: 392mm  
Spout reach: 216mm  
Min. pressure: 0.3 bar



Aquatrend Dual Lever Tap

A modern favourite, the Aquatrend delivers 'on-trend' styling with superb water output.

TRE1CM/ Chrome  
TRE1BF/ Brushed  
TRE1MB/ Matt Black  
TRE1BB/ Brushed Brass

Tap height: 379mm  
Spout reach: 216mm  
Min. pressure: 0.3 bar





# DUAL LEVER TAPS



## Parma Dual Lever Tap

A modern, minimalist design with flair – Parma is the perfect accompaniment to any styled kitchen scheme.

TPM1CM/ Chrome  
TPM1BF/ Brushed  
TPM1BB/ Brushed Brass

Tap height: 389mm  
Spout reach: 216mm  
Min. pressure: 0.3 bar



## Igneous Dual Lever Tap

A stylish and practical kitchen tool that combines modern design with superior functionality. Its sleek single-lever handle allows for precise control over water flow and temperature, making it easy to use.

TIGNDLAS/ Ash Black (AS)  
TIGNDLCW/ Crystal White (CW)  
TIGNDLDG/ Dove Grey (DG)

Tap height: 367mm  
Spout reach: 194mm  
Min. Pressure: 0.4 bar



## *New* Aquaclassic Dual Lever Tap

The Aquaclassic dual lever tap sits seamlessly within a traditionally styled kitchen, complementing a ceramic kitchen sink perfectly.

TAQCLASSDLAB/WH  
Antique Brass - White Handles

TAQCLASSDLBF/BF  
Brushed

TAQCLASSDLCM/CM  
Chrome

TAQCLASSDLCM/WH  
Chrome - White Handles

Tap height: 360mm  
Spout reach: 196mm  
Min. pressure: 0.5 bar



## Intense Dual Lever Tap

If striking design is what you seek, the Intense tap delivers this, featuring a tall sweeping neck and available in 5 colours.

TID1CM/ Chrome  
TID1BF/ Brushed  
TID1BC/ Brushed Copper  
TID1MB/ Matt Black  
TID1GR/ Graphite

Tap height: 398mm  
Spout reach: 216mm  
Min. pressure: 0.5 bar



## Aquaquad Dual Lever Tap

Modern in design with a quad style neck and tabbed handles, the Aquaquad is available in four finishes.

TAQ2CM/ Chrome  
TAQ2BF/ Brushed  
TAQ2MB/ Matt Black  
TAQ2BB/ Brushed Brass

Tap height: 310mm  
Spout reach: 192mm  
Min. pressure: 0.4 bar



## Salorno Dual Lever Tap

Subtly designed to suit any style of kitchen, featuring easy to use paddle handles with a low square neck design.

TSN1CM/ Chrome finish  
TSN1BF/ Brushed finish

Tap height: 232mm  
Spout reach: 207mm  
Min. pressure: 0.4 bar



## Estuary Dual Lever Tap

Classically designed featuring a curvature body and tapered handle design, available in four finishes.

TES1CM/ Chrome  
TES1BF/ Brushed  
TES1BC/ Brushed Copper  
TES1BB/ Brushed Brass

Tap height: 361mm  
Spout reach: 194mm  
Min. pressure: 0.3 bar



## Aquadisc 5 Dual Lever Tap

Featuring easy operable handles and a straight spout design, the Aquadisc 5 is a modern favourite.

TAD5CM/ Chrome finish

Tap height: 277mm  
Spout reach: 212mm  
Min. pressure: 0.3 bar



## Monorise Dual Lever Tap

A popular favourite, Monorise features slim pin handles for a minimalist, subtle finished look.

TMR1CM/ Chrome  
TMR1BF/ Brushed

Tap height: 363mm  
Spout reach: 194mm  
Min. pressure: 0.5 bar



## Aquavibe Dual Lever Tap

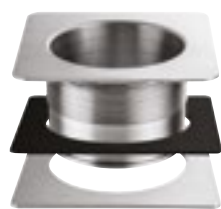
A classic favourite with pin handle design and short sweeping neck.

TVB1CM/ Chrome finish  
TVB1BF/ Brushed finish

Tap height: 287mm  
Spout reach: 214mm  
Min. pressure: 0.2 bar



# SINK ACCESSORIES



Square Waste Adaptor

To be used with waste disposal units on Arlington handed sinks.

WDUSQAD/



Chopping Board

Bamboo

KA10/

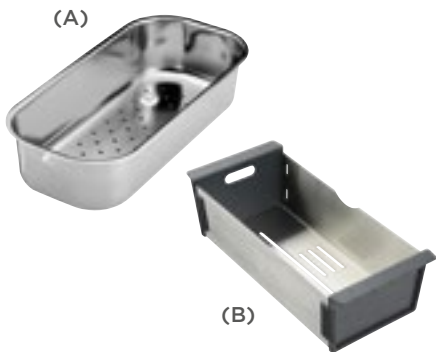


Strainer Basket

Compatible with all sinks

Stainless steel

KA20SS/



Strainer Bowl

Stainless Steel

KA28SS/ (A)

KA09/ (B)

# RAPID-FIT PLUMB KIT

- **Quick Fix Installation** – pre-assembled, reducing installation time for installers, and eliminates installation errors.
- **Water-Tight Fittings** – no risk for water leaks when installed.
- **Space Saving** – compact design allows homeowners to utilise more space underneath the sink when installed.
- **Adjustable** – the double bowl option can be adapted so that it is compatible with 1.5 bowl sinks as well as double bowl sinks suiting different waste configurations.



New  
SINGLE BOWL  
PLUMBING KIT

WPLUMB01/



New  
DOUBLE BOWL  
PLUMBING KIT

WPLUMB02/

# WASTE DISPOSAL UNITS

Clean, hygienic and safe to use, all Rangemaster waste disposal units are easy to install and compatible with all of our sinks. With a wide choice of different options available all of which include the following features:

- **Bio Shield Antimicrobial Protection** - a hygienic agent which inhibits the growth of a wide range of micro organisms and provides protection against odours.
- **Turntable Operation** - no knives or blades are used thanks to the turntable included which uses generated centrifugal force to hurl waste against the grinding ring which shreds the waste into fine pieces.
- **Torque Master** - a balanced grinding system which provides superior torque speed with less vibration and noise providing a longer life system.
- **Sound Shell** - protected with an outer shell which reduces noise levels when the waste disposal unit is in operation.
- **Continuous Feed Function** – mains operated controlled by a switch.



Economy 500

Suitable for small households.

WDU500/  
2 year guarantee



Standard 700

Suitable for small to medium households.

WDU700/  
3 year guarantee



Mid Duty 750

Suitable for large households.

WDU750/  
3 year guarantee



	STAINLESS STEEL INSET SINKS	Arlington ARL1051/	Arlington ARL1052/	Baltimore BL8001/	Baltimore BL9501/	Baltimore BL9502/	Boston BST8601_/	Boston BST8602_/	Cosmo CSM60/
Drainer Position		Reversible	Reversible	Reversible	Reversible	Reversible	Handed	Handed	-
No. of Bowls		1	1.5	1	1	1.5	1	1.5	1
Min. Base Unit (mm)		600	600	450	600	600	600	600	600
Overall Length (mm)		1000	1000	800	950	950	860	860	600
Overall Width (mm)		500	500	508	508	508	520	520	515
Cutout Size Length (mm)		980	980	780	930	930	840	840	580
Cutout Size Width (mm)		480	480	488	488	488	500	500	495
Main Bowl Length (mm)		450	340	340	420	340	500	340	550
Main Bowl Width (mm)		400	400	424	400	410	400	400	400
Main Bowl Depth (mm)		215	210	150	160	160	210	205	200
Second Bowl Length (mm)		-	170	-	-	175	-	180	-
Second Bowl Width (mm)		-	300	-	-	320	-	400	-
Second Bowl Depth (mm)		-	150	-	-	80	-	205	-
Material		18/10 SS	18/10 SS	18/10 SS	18/10 SS	18/10 SS	18/10 SS	18/10 SS	18/10 SS
Gauge (mm)		0.9	0.9	0.7	0.7	0.8	1.0	1.0	1.0
Finish Drainer		Micro-Sheen	Micro-Sheen	Micro-Sheen	Micro-Sheen	Micro-Sheen	Micro-Sheen	Micro-Sheen	-
Finish Bowl		Micro-Sheen	Micro-Sheen	Micro-Sheen	Micro-Sheen	Micro-Sheen	Micro-Sheen	Micro-Sheen	Micro-Sheen
Waste Size Ø (mm)		1 x 90	2 x 90	1 x 89	1 x 89	2 x 89	1 x 90	2 x 90	1 x 89
Waste Kit		Included	Included	Included	Included	Included	Included	Included	Included
Tap Hole Size Ø (mm)		1 x 35	1 x 35	1 x 35	1 x 35	1 x 35	1 x 35	1 x 35	1 x 35
Min. Worktop Thickness (mm)		20	20	28	28	28	20	20	25
Max. Worktop Thickness (mm)		35	35	40	40	40	35	35	45
Guarantee (years)		25	25	25	25	25	25	25	25

Cosmo CSM9601_/	Cosmo CSM9602_/	Glendale GL9501/	Glendale GL9502/	Houston HS9851/	Houston HS9852/	Iconica ICN9501/	Iconica ICN9502/	Manhattan MN10101_/	Manhattan MN10102_/
Handed	Handed	Reversible	Reversible	Reversible	Reversible	Reversible	Reversible	Handed	Handed
1	1.5	1	1.5	1	1.5	1	1.5	1	1.5
600	600	500	600	600	600	600	600	500	600
960	960	950	950	985	985	950	950	1010	1010
500	500	508	508	508	508	508	508	515	515
940	940	930	930	965	965	930	930	990	990
480	480	488	488	488	488	488	488	495	495
460	350	360	360	400	350	400	340	400	350
400	400	424	424	420	420	400	400	420	420
210	200	155	155	190	190	205	200	190	190
-	180	-	156	-	156	-	170	-	156
-	400	-	342	-	342	-	300	-	342
-	140	-	120	-	120	-	130	-	120
18/10 SS	18/10 SS	18/10 SS	18/10 SS	18/10 SS	18/10 SS	18/10 SS	18/10 SS	18/10 SS	18/10 SS
1.0	1.0	0.7	0.7	0.9	0.9	0.9	0.9	0.9	0.9
Micro-Sheen	Micro-Sheen	Micro-Sheen	Micro-Sheen	Micro-Sheen	Micro-Sheen	Micro-Sheen	Micro-Sheen	Micro-Sheen	Micro-Sheen
Micro-Sheen	Micro-Sheen	Micro-Sheen	Micro-Sheen	Micro-Sheen	Micro-Sheen	Micro-Sheen	Micro-Sheen	Micro-Sheen	Micro-Sheen
1 x 90	2 x 90	1 x 89	2 x 89	1 x 89	2 x 89	1 x 90	2 x 90	1 x 89	2 x 89
Included	Included	Included	Included	Included	Included	Included	Included	Included	Included
1 x 35	1 x 35	1 x 35	1 x 35	1 x 35	1 x 35	1 x 35	1 x 35	1 x 35	1 x 35
5	5	28	28	28	28	20	20	28	28
40	40	40	40	40	40	35	35	40	40
25	25	25	25	25	25	25	25	25	25

	Michigan MG8001/	Michigan MG9501/	Michigan MG9502/	Oakland OL9851_/	Oakland OL9852_/	Oakland OAK1051/	Oakland OAK1052/
Drainer Position	Reversible	Reversible	Reversible	Handed	Handed	Reversible	Reversible
No. of Bowls	1	1	1.5	1	1.5	1	1.5
Min. Base Unit (mm)	500	500	600	600	600	600	600
Overall Length (mm)	800	950	950	985	985	1000	1000
Overall Width (mm)	508	508	508	508	508	500	500
Cutout Size Length (mm)	780	930	930	965	965	980	980
Cutout Size Width (mm)	488	488	488	488	488	480	480
Main Bowl Length (mm)	360	360	360	450	360	450	340
Main Bowl Width (mm)	424	424	424	420	424	400	400
Main Bowl Depth (mm)	155	155	155	190	170	210	205
Second Bowl Length (mm)	-	-	156	-	156	-	170
Second Bowl Width (mm)	-	-	300	-	342	-	300
Second Bowl Depth (mm)	-	-	120	-	120	-	135
Material	18/10 SS	18/10 SS	18/10 SS	18/10 SS	18/10 SS	18/10 SS	18/10 SS
Gauge (mm)	0.7	0.7	0.7	0.9	0.9	0.9	0.9
Finish Drainer	Micro-Sheen	Micro-Sheen	Micro-Sheen	Micro-Sheen	Micro-Sheen	Micro-Sheen	Micro-Sheen
Finish Bowl	Micro-Sheen	Micro-Sheen	Micro-Sheen	Micro-Sheen	Micro-Sheen	Micro-Sheen	Micro-Sheen
Waste Size Ø (mm)	1 x 89	1 x 89	2 x 89	1 x 89	2 x 89	1 x 90	2 x 90
Waste Kit	Included	Included	Included	Included	Included	Included	Included
Tap Hole Size Ø (mm)	1 x 35	1 x 35	1 x 35	1 x 35	1 x 35	1 x 35	1 x 35
Min. Worktop Thickness (mm)	28	28	28	28	28	20	20
Max. Worktop Thickness (mm)	40	40	40	40	40	35	35
Guarantee (years)	25	25	25	25	25	25	25

STAINLESS STEEL UNDERMOUNT SINKS	Baseline BASE18/	Baseline BASE34/	Baseline BASE50/	Classic UB15/	Classic UB35/	Classic UB40/	Classic UB45/	Classic UB3515_/	Classic UB4015_/	Classic UB3535/	Classic UB4040/
	-	-	-	-	-	-	-	Reversible or Handed	Handed	-	-
	1	1	1	1	1	1	1	1.5	1.5	2	2
	300	450	600	300	400	500	600	600	800	800	1000
	460	460	460	185	378	460	490	597	671	787	945
	214	360	520	370	448	440	460	472	460	472	460
	-	-	-	-	-	-	-	-	-	-	-
	-	-	-	-	-	-	-	-	-	-	-
	396	396	396	156	350	420	450	350	420	350	420
	150	296	456	342	420	400	420	420	400	420	400
	145	190	190	120	190	190	190	190	190	190	190
	-	-	-	-	-	-	-	156	156	350	420
	-	-	-	-	-	-	-	342	342	420	400
	-	-	-	-	-	-	-	120	120	190	190
	18/10 SS	18/10 SS	18/10 SS	18/10 SS	18/10 SS	18/10 SS	18/10 SS	18/10 SS	18/10 SS	18/10 SS	18/10 SS
	1.0	1.0	1.0	0.8	0.8	0.9	0.9	0.9	0.9	0.9	0.9
	-	-	-	-	-	-	-	-	-	-	-
	Micro-Sheen	Micro-Sheen	Micro-Sheen	Micro-Sheen	Micro-Sheen	Micro-Sheen	Micro-Sheen	Micro-Sheen	Micro-Sheen	Micro-Sheen	Micro-Sheen
	1 x 90	1 x 90	1 x 90	1 x 89	1 x 89	1 x 89	1 x 89	2 x 89	2 x 89	2 x 89	2 x 89
	Included	Included	Included	Included	Included	Included	Included	Included	Included	Included	Included
	-	-	-	-	-	-	-	-	-	-	-
	20	20	20	-	-	-	-	-	-	-	-
	20	20	20	-	-	-	-	-	-	-	-
	25	25	25	25	25	25	25	25	25	25	25

NB. Spectra bowls can be installed as inset or undermount, please visit [www.rangemastersinks.co.uk](http://www.rangemastersinks.co.uk) for cut out dimensions

	Cubix CBX32/	Cubix CBX42/	Cubix CBX50/	Cubix CBX70/	Cubix CBX3218_/_	Kube KUBE5018_/_	Kube KUBE4040/	Kube KUBE18/	Kube KUBE34/
Drainer Position	-	-	-	-	Handed	Handed	-	-	-
No. of Bowls	1	1	1	1	1.5	1½	2	1	1
Min. Base Unit (mm)	400	500	600	800	600	800	900	300	450
Overall Length (mm)	360	460	540	740	560	740	860	220	380
Overall Width (mm)	440	440	440	440	440	440	440	440	440
Cutout Size Length (mm)	*	*	*	*	*	-	-	-	-
Cutout Size Width (mm)	*	*	*	*	*	-	-	-	-
Main Bowl Length (mm)	320	420	500	700	320	500	400	180	340
Main Bowl Width (mm)	400	400	400	400	400	400	400	400	400
Main Bowl Depth (mm)	200	200	200	200	200	200	200	140	200
Second Bowl Length (mm)	-	-	-	-	180	180	400	-	-
Second Bowl Width (mm)	-	-	-	-	400	400	400	-	-
Second Bowl Depth (mm)	-	-	-	-	140	140	200	-	-
Material	18/10 SS	18/10 SS	18/10 SS	18/10 SS	18/10 SS	18/10 SS	18/10 SS	18/10 SS	18/10 SS
Gauge (mm)	1.0	1.0	1.0	1.0	1.0	1.0	1.0	1.0	1.0
Finish Drainer	-	-	-	-	-	-	-	-	-
Finish Bowl	Micro-Sheen	Micro-Sheen	Micro-Sheen	Micro-Sheen	Micro-Sheen	Micro-Sheen	Micro-Sheen	Micro-Sheen	Micro-Sheen
Waste Size Ø (mm)	1 x 90	1 x 90	1 x 90	1 x 90	2 x 90	2 x 90	2 x 90	1 x 90	1 x 90
Waste Kit	Included	Included	Included	Included	Included	Included	Included	Included	Included
Tap Hole Size Ø (mm)	-	-	-	-	-	-	-	-	-
Min. Worktop Thickness (mm)	5	5	5	5	5	25	25	25	25
Max. Worktop Thickness (mm)	45	45	45	45	45	45	45	45	45
Guarantee (years)	25	25	25	25	25	25	25	25	25

	GRANITE INSET SINKS	Andesite AND860_/_/_	Andesite AND1051_/_	Andesite AND1052_/_	Elements ELE1051_/_	Elements ELE1052_/_	Loa LOA1051_/_/_	Loa LOA1052_/_/_	Loa LOA1152_/_/_	Loa LOA860_/_/_
Drainer Position		Reversible	Reversible	Reversible	Reversible	Reversible	Reversible	Reversible	Reversible	Reversible
No. of Bowls		1	1	1.5	1	1.5	1	1.5	2	1
Min. Base Unit (mm)		450	600	600	600	600	600	600	800	450
Overall Length (mm)		860	1000	1000	1000	1000	1000	1000	1160	860
Overall Width (mm)		500	500	500	500	500	500	500	500	500
Cutout Size Length (mm)		840	980	980	980	980	980	980	1140	840
Cutout Size Width (mm)		480	480	480	480	480	480	480	480	480
Main Bowl Length (mm)		347	480	345	480	380	480	360	338	330
Main Bowl Width (mm)		430	430	430	420	420	435	434	435	435
Main Bowl Depth (mm)		200	200	200	180	180	180	180	180	180
Second Bowl Length (mm)		-	-	155	-	125	-	145	338	-
Second Bowl Width (mm)		-	-	340	-	282	-	300	435	-
Second Bowl Depth (mm)		-	-	146	-	120	-	128	180	-
Material		Igneous Granite	Igneous Granite	Igneous Granite	Igneous Granite	Igneous Granite	Igneous Granite	Igneous Granite	Igneous Granite	Igneous Granite
Gauge (mm)		-	-	-	-	-	-	-	-	-
Finish Drainer		-	-	-	-	-	-	-	-	-
Finish Bowl		-	-	-	-	-	-	-	-	-
Waste Size Ø (mm)		1 x 90	1 x 90	2 x 90	1 x 90	2 x 90	1 x 90	2 x 90	2 x 90	1 x 90
Waste Kit		Included	Included	Included	Included	Included	Included	Included	Included	Included
Tap Hole Size Ø (mm)		-	-	-	-	-	-	-	-	-
Min. Worktop Thickness (mm)		30	30	30	30	30	12	12	12	12
Max. Worktop Thickness (mm)		40	40	40	40	40	42	42	42	42
Guarantee (years)		25	25	25	25	25	25	25	25	25

Kube KUBE40/	Kube KUBE50/	Kube KUBE70/	Kube KUBE3416_/_	Quad QUAD16/	Quad QUAD34/	Quad QUAD48/	Quad QUAD3416_/_	Quad QUAD3418_/_	Quad QUAD3434/	Spectra SPE50_/_	Spectra SPE3416_/_
-	-	-	Handed	-	-	-	Handed	Handed or Reversible	-	-	Handed
1	1	1	1½	1	1	1	1.5	1.5	2	1	1.5
500	600	800	600	300	400	600	600	600	800	600	600
440	540	740	560	200	390	530	580	600	760	540	555
440	440	440	440	340	450	450	450	450	450	440	440
-	-	-	-	-	-	-	-	-	-	-	-
-	-	-	-	-	-	-	-	-	-	-	-
400	500	700	340	160	340	480	340	340	340	500	340
400	400	400	400	300	400	400	400	400	400	400	400
200	200	200	200	120	190	200	190	190	190	200	200
-	-	-	160	-	-		160	180	340	-	160
-	-	-	400	-	-		300	400	400	-	400
-	-	-	140	-	-		120	120	190	-	140
18/10 SS	18/10 SS	18/10 SS	18/10 SS	18/10 SS	18/10 SS	18/10 SS	18/10 SS	18/10 SS	18/10 SS	18/10 SS	18/10 SS
1.0	1.0	1.2	1.0	0.9	0.9	0.9	0.9	0.9	0.9	1.0	1.0
-	-	-	-	-	-	-	-	-	-	-	-
Micro-Sheen	Micro-Sheen	Micro-Sheen	Micro-Sheen	Micro-Sheen	Micro-Sheen	Micro-Sheen	Micro-Sheen	Micro-Sheen	Micro-Sheen	PVD	PVD
1 x 90	1 x 90	1 x 90	2 x 90	1 x 90	1 x 90	1 x 90	1 x 90	1 x 90	1 x 90	1 x 89	2 x 89
Included	Included	Included	Included	Included	Included	Included	Included	Included	Included	Included	Included
-	-	-	-	-	-	-	-	-	-	-	-
25	25	25	25	5	5	5	5	5	5	5	5
45	45	45	45	45	45	45	45	45	45	45	45
25	25	25	25	25	25	25	25	25	25	25	25

Oridian ORI570_/_/_	Oridian ORI7901_/_/_	Oridian ORI5902_/_/_	Oridian ORI7902_/_/_	Prato PRA570_/_/_	Prato PRA790_/_/_	Topaz TOP1001_/_/_	Topaz TOP1002_/_/_	Topaz TOP860_/_/_
-	-	Left Hand	-	-	-	Reversible	Reversible	Reversible
1	1.5	1	2	1	1	1	1.5	1
600	600	800	800	600	800	600	600	450
570	590	790	790	570	790	1000	1000	860
500	500	500	500	510	510	510	510	510
550	570	770	770	550	770	980	980	840
480	480	480	480	480	480	480	480	480
500	325	720	343	506	726	478	319	330
400	400	400	395	386	386	421	421	421
200	200	200	210	200	200	200	200	200
-	160	-	343	-	-	-	150	-
-	400	-	395	-	-	-	421	-
-	155	-	210	-	-	-	140	-
Granite	Granite	Granite	Granite	Igneous Granite	Igneous Granite	Igneous Granite	Igneous Granite	Igneous Granite
-	-	-	-	-	-	-	-	-
-	-	-	-	-	-	-	-	-
-	-	-	-	-	-	-	-	-
1 x 90	2 x 90	1 x 90	2 x 90	1 x 90	1 x 90	1 x 90	2 x 90	1 x 90
Included	Included	Included	Included	Included	Included	Included	Included	Included
-	-	-	-	-	-	-	-	-
12	12	12	12	12	12	12	12	12
42	42	42	42	42	42	42	42	42
25	25	25	25	25	25	25	25	25



	GRANITE UNDERMOUNT SINKS	Oridian ORIUN540__	Oridian ORIUN5602__	Oridian ORIUN7601__	Oridian ORIUN7602__	Paragon PAR4553_/_	Paragon PAR3115_/_	Paragon PAR3641_/_
Drainer Position		-	Left Hand	-	-	-	Right Hand	-
No. of Bowls		1	1½	1	2	1	1½	2
Min. Base Unit (mm)		600	600	800	800	600	600	900
Overall Length (mm)		540	560	760	760	533	550	824
Overall Width (mm)		440	440	440	435	457	430	481
Cutout Size Length (mm)		500	520	720	720	488	490	776
Cutout Size Width (mm)		400	400	400	395	410	370	433
Main Bowl Length (mm)		500	325	720	343	469	310	362
Main Bowl Width (mm)		400	400	400	395	393	370	395
Main Bowl Depth (mm)		200	200	200	220	209	200	241
Second Bowl Length (mm)		-	160	-	343	-	152	362
Second Bowl Width (mm)		-	400	-	395	-	370	395
Second Bowl Depth (mm)		-	155	-	220	-	130	241
Material		Igneous Granite	Igneous Granite	Igneous Granite	Igneous Granite	Igneous Granite	Igneous Granite	Igneous Granite
Gauge (mm)		-	-	-	-	-	-	-
Finish Drainer		-	-	-	-	-	-	-
Finish Bowl		-	-	-	-	-	-	-
Waste Size Ø (mm)		1 x 90	2 x 90	1 x 90	2 x 90	1 x 92	2 x 90	2 x 92
Waste Kit		Included	Included	Included	Included	Included	Included	Included
Tap Hole Size Ø (mm)		-	-	-	-	-	-	-
Min. Worktop Thickness (mm)		30	30	30	30	30	30	30
Max. Worktop Thickness (mm)		40	40	40	40	40	40	40
Guarantee (years)		25	25	25	25	25	25	25

	FIRE-CLAY CERAMIC INSET SINKS	Arlington CARI051WH/	Arlington CARI052WH/	Austell CAUI0101__/_	Austell CAUI0102__/_	Rustic CRTI0101WH/	Rustic CRTI0202WH/	Tenby CTE8501WH/	Tenby CTEI0102WH/
Drainer Position		Reversible	Reversible	Reversible	Reversible	Reversible	Reversible	Reversible	Reversible
No. of Bowls		1	1 ½	1	1½	1	1½	1	1½
Min. Base Unit (mm)		600	600	600	600	600	600	500	600
Overall Length (mm)		985	985	1000	1000	1000	1000	850	997
Overall Width (mm)		500	500	500	500	500	500	500	497
Cutout Size Length (mm)		965	965	970	970	980	980	810	950
Cutout Size Width (mm)		480	480	470	470	480	480	460	460
Main Bowl Length (mm)		424	334	449	340	460	360	340	330
Main Bowl Width (mm)		374	375	415	415	390	390	370	370
Main Bowl Depth (mm)		193	195	190	190	195	195	200	215
Second Bowl Length (mm)		-	172	-	170	-	147	-	135
Second Bowl Width (mm)		-	260	-	300	-	260	-	253
Second Bowl Depth (mm)		-	145	-	142	-	120	-	128
Material		Fire-clay	Fire-clay	Fire-clay	Fire-clay	Fire-clay	Fire-clay	Fire-clay	Fire-clay
Gauge (mm)		-	-	-	-	-	-	-	-
Finish Drainer		-	-	-	-	-	-	-	-
Finish Bowl		-	-	-	-	-	-	-	-
Waste Size Ø (mm)		1 x 90	2 x 90	1 x 90	2 x 90	1 x 89	1 x 90, 1 x 60	1 x 90	1 x 90, 1 x 60
Waste Kit		Included	Included	Included	Included	Included	Included	Included	Included
Tap Hole Size Ø (mm)		-	-	-	-	-	-	-	-
Min. Worktop Thickness (mm)		-	-	-	-	-	-	-	-
Max. Worktop Thickness (mm)		-	-	-	-	-	-	-	-
Guarantee (years)		10	10	10	10	10	10	10	10



	FIRE-CLAY CERAMIC BELFAST AND UNDERMOUNT INSET SINKS	Belfast CBL595WH/	Classic Belfast CCBL595WH/	Classic Belfast CDB800WH/	Grange Belfast CGR595_/	Farmhouse Belfast CFBL595_/	Farmhouse CFBL795WH/	Farmhouse Belfast CFBL800WH/	Farmhouse Belfast CFBL900WH/	Hartland CHA622WH/
Drainer Position		-	-	-	-	-	-	-	-	-
No. of Bowls		1	1	2	1	1	1	2	2	1
Min. Base Unit (mm)		600	600	800	600	600	800	800	900	600
Overall Length (mm)		595	595	800	595	595	795	793	895	622
Overall Width (mm)		475	455	500	455	455	460	491	460	494
Overall Height (mm)		220	250	220	250	252	220	220	220	170
Cutout Size Length (mm)		-	-	-	-	-	-	-	-	-
Cutout Size Width (mm)		-	-	-	-	-	-	-	-	-
Main Bowl Length (mm)		550	525	365	555	535	735	366	417	540
Main Bowl Width (mm)		420	385	450	415	395	400	450	420	401
Main Bowl Depth (mm)		200	215	200	227	222	197	195	194	186
Second Bowl Length (mm)		-	-	365	-	-	-	366	417	-
Second Bowl Width (mm)		-	-	450	-	-	-	450	420	-
Second Bowl Depth (mm)		-	-	200	-	-	-	195	194	-
Material		Fire-clay	Fire-clay	Fire-clay	Fire-clay	Fire-clay	Fireclay Ceramic	Fire-clay	Fire-clay	Fire-clay
Gauge (mm)		-	-	-	-	-	-	-	-	-
Finish Drainer		-	-	-	-	-	-	-	-	-
Finish Bowl		-	-	-	-	-	-	-	-	-
Waste Size Ø (mm)		1 x 90	1 x 65	2 x 90	1 x 60	1 x 60	1 x 90	2 x 89	2 x 90	1 x 89
Waste Kit		Please order WKIT15/	Please order WKIT13/	Please order WKIT24/	Included	Included	Included	Included	Included	Included
Tap Hole Size Ø (mm)		-	-	-	-	-	-	-	-	1 x 35
Min. Worktop Thickness (mm)		-	-	-	-	-	-	-	-	20
Max. Worktop Thickness (mm)		-	-	-	-	-	-	-	-	40
Guarantee (years)		10	10	10	10	10	10	10	10	10

NB. Rustique bowls can be installed as inset or undermount, please visit [www.rangemastersinks.co.uk](http://www.rangemastersinks.co.uk) for cut out dimensions

	FILTER TAPS	Cruciform TSA5_/		PULL OUT TAPS	Aquadisc 5 Pull Out TAD5POCM/	Aquatrend Spring TREISPRCM/
Min. Pressure (bar)		0.2	Min. Pressure (bar)		0.75	0.5
Max. Pressure (bar)		5.5	Max. Pressure (bar)		5.5	5.5
Overall Tap Height (mm)		392	Overall Tap Height (mm)		275	528
Spout Exit Reach (mm)		216	Spout Exit Reach (mm)		218	188
Spout Exit Height (mm)		265	Spout Exit Height (mm)		244	200
Guarantee (years)		5	Guarantee (years)		5	5

	Belfast Monobloc TBM1_/	Belfast Traditional TBL1_/	Conical TCO1_/	Conical Single Lever TCOSSL1___/	Cruciform TCF2_/	Estuary TES1_/	Hemlock Dual Lever THEMDL___/	Hemlock Single Lever THEMSL___/	Intense TID1_/
Min. Pressure (bar)	0.3	0.1	0.3	0.6	0.3	0.3	0.4	0.7	0.5
Max. Pressure (bar)	5.5	5.5	5.5	5.5	5.5	5.5	5	5	5.5
Overall Tap Height (mm)	343	368	294	294	392	361	405	412	398
Spout Exit Reach (mm)	193	190	212	212	216	194	216	216	216
Spout Exit Height (mm)	232	260	264	264	265	230	280	287	273
Guarantee (years)	5	5	5	5	5	5	5	5	5

Rustique CRUB1740WH/	Rustique CRUB385WH/	Rustique CRUB4040WH/	Rustique CRUB4936WH/	Rustique CRUB5340WH/	Rustique CRUB3315WH/	Rustique CRUB3314WH/	Rustique CRUB3216WH/	Rustique CRUB4329WH/	Sandwood SAN5963WH/
-	-	-	-	-	Right Hand	Right Hand	Right Hand	Right-hand	-
1	1	1	1	1	1.5	1.3	1.5	2	1
300	500	500	600	600 inset 650 u/mount	600	600 inset 650 u/mount	600 inset 650 u/mount	900	600
234	445 Ø	462	557	598	557	600	595	796	597
460	445 Ø	462	430	462	430	522	460	462	630
-	-	-	-	-	-	-	-	-	220
-	-	-	-	-	490/530	-	-	-	-
-	-	-	-	-	365/405	-	-	-	-
174	385 Ø	400	494	536	330	360	337	431	531
400	385 Ø	400	367	401	367	460	400	401	441
195	174	195	194	195	189	195	196	196	191
-	-	-	-	-	146	162	183	286	-
-	-	-	-	-	367	300	400	401	-
-	-	-	-	-	189	175	176	196	-
Fire-clay	Fire-clay	Fire-clay	Fire-clay	Fire-clay	Fire-clay	Fire-clay	Fire-clay	Fireclay Ceramic	Fireclay Ceramic
-	-	-	-	-	-	-	-	-	-
-	-	-	-	-	-	-	-	-	-
-	-	-	-	-	-	-	-	-	-
1 x 90	1 x 89	1 x 90	1 x 90	1 x 89	2 x 90	2 x 90	2 x 90	2 x 90	1 x 90
Included	Included	Included	Included	Included	Included	Included	Included	Included	Included
-	-	-	-	-	-	-	-	-	-
12	12	12	12	12	12	12	12	12	-
40	40	40	40	40	40	40	40	40	-
10	10	10	10	10	10	10	10	10	10

Aquatrend TRE1PO_/	Aquatrend SL TRE1SLPO_/	Pro Spray TPROSLPOCM/	TAPS	Aquaclassic Bridge TAQCLASSBR___/	Aquaclassic Dual Lever TAQCLASSDL___/	Aquadisc 5 TAD5_/	Aquatrend TRE1_/	Aquatrend Single Lever TREISL_/	Aquavibe TVB1_/	Aquaquad TAQ2_/	Aspire TAI1_/
1.5	1.5	0.5		0.5	0.5	0.3	0.3	0.4	0.2	0.4	0.4
5.5	5.5	5		5	5	5.5	5.5	5.5	5.5	5.5	5.5
388	390	546		359	360	277	379	390	287	310	365
220	220	232		197	196	212	216	216	214	192	231
203	205	131		256	229	247	253	264	247	237	230
5	5	5		5	5	5	5	5	5	5	5

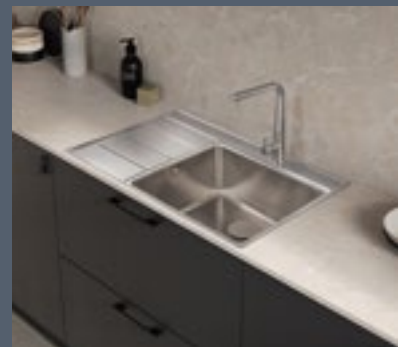
Igneous Dual Lever TIGNDL___/	Igneous Single Lever TIGNSL___/	Kube Dual Lever TKUBEDL___/	Kube Single Lever TKUBESL___/	Monorise TMR1_/	Parma TPM1_/	Quad Dual Lever TQUADDLCM/	Salorno TSN1_/	Waverley Bridge TWAVBR___/	Waverley Dual Lever TWAVDL___/
0.4	0.7	0.5	0.5	0.5	0.3	0.5	0.4	0.3	0.4
5	5	5	5	5.5	5.5	5	5.5	5	5
367	360	295	320	363	389	341	232	272	295
194	181	217	218	194	216	200	207	228	228
237	261	275.5	301	233	263	218	203	202	226
5	5	5	5	5	5	5	5	5	5





# RANGEMASTER®

## SINKS & TAPS



## PROVIDING SOLUTIONS FOR *EVERY* INSTALLATION

STAINLESS STEEL | FIRECLAY CERAMIC | GRANITE | TAPS | WASTE DISPOSAL

### Trade Enquiries

+44 (0)115 946 4000

[tradesales@agarangemaster.co.uk](mailto:tradesales@agarangemaster.co.uk)

Meadow Lane, Long Eaton, Nottingham,  
NG10 2GD, England

### Consumer Enquiries

01926 457628

[consumers@agarangemaster.co.uk](mailto:consumers@agarangemaster.co.uk)

[rangemastersinks.co.uk](http://rangemastersinks.co.uk)

D007989  
December 25